

# **Ventura County Grand Jury 2008 - 2009**



## **Final Report**

### **School District Administration: Is the Cost Too High?**

**Date Issued  
May 18, 2009**

*(This page intentionally blank)*

## School District Administration: Is the Cost Too High?

### Summary

With recent State budget problems and their impact on the funding of our schools, the 2008-2009 Ventura County Grand Jury (Grand Jury) decided to open an investigation into the cost of administering our public schools, which is approximately \$128,000,000 per year. The Grand Jury decided to narrow the investigation to the 20 public school **districts'** (Districts) administrative costs **and not** the cost of **individual schools** in Ventura County.

Most of the Districts are comprised of:

- a school board/trustees consisting of at least three to five members
- a superintendent
- assistant superintendents
- directors
- administrative/special services staff

Furthermore, there is the added expense of operating each district office and other administrative facilities. Most of the Districts also have support departments such as Information & Technology, Facilities, Purchasing, and Transportation which add to the cost of operating individual districts.

The Grand Jury concludes that by consolidation/unification<sup>1</sup> of some of the Districts, and by using the Ventura County Office of Education (VCOE) to centralize some services and departments, significant savings could be achieved. These savings could be used for the funding of teachers and educational programs at individual schools.

The Grand Jury recommends that the VCOE, Districts, and the Ventura County Committee on School District Organization (VCCSDO) should investigate ways to consolidate or unify some of the 20 Districts with the potential to save millions of dollars in administrative costs. Some suggestions are as follows:

- consolidate/unify Briggs Elementary, Fillmore Unified School District, Mupu Elementary, Santa Paula Elementary, Santa Paula Union High, and Santa Clara Elementary
- consolidate Ojai Unified and Ventura Unified
- consolidate/unify Hueneme Elementary, Ocean View Elementary, Oxnard Elementary, Oxnard Union High, and Rio Elementary
- consolidate/unify Mesa Union Elementary, Pleasant Valley Elementary, and Somis Union Elementary

---

<sup>1</sup> Consolidation is the combining of two or more elementary or high school districts with adjoining borders to form a single district.

Unification is the joining together of all, or part of, an elementary school district (grades K-8) with a high school district (grades 9-12) to form a new district encompassing grades K-12.

- consolidate Conejo Valley Unified, Oak Park Unified
- consolidate Moorpark Unified, Simi Valley Unified

Other consolidations or unifications could be used to achieve similar savings.

The Grand Jury also recommends that the VCOE look into ways of centralizing services and departments such as Information & Technology, Purchasing, Facilities, and Transportation to help control and lower costs for all public school districts and the VCOE.

## **Background**

Ventura County was formed in 1873 and as the county expanded, school districts were formed to serve the educational needs of county residents. Over the years 20 school districts emerged. Most of the Districts are comprised of:

- a school board/trustees consisting of at least three to five members
- a superintendent
- assistant superintendents
- directors
- administrative/special services staff

Most of the Districts also have support departments such as Information and Technology, Facilities, Purchasing, and Transportation which add to the cost of operating the district.

In addition, the State has mandated that each county form an Office of Education to oversee the disbursement of funds, ensure the application of state mandated programs, and apply uniform standards of training and certification of teachers. The VCOE Educational Services Branch provides an array of training, support and resources for educators, staff, and officials throughout the county. The VCOE also ensures that Districts comply with State legal requirements and educational goals, identify emerging educational needs, and develop and disseminate sound and responsive educational practices and programs.

The VCCSDO studies and makes recommendations in the areas of:

- organization and reorganizations of school districts
- transfer of territory between and/or among school districts
- number of trustees and the manner by which they are elected

The funding of each of the Districts is determined at the State level using the Average Daily Attendance (ADA) of each student which is part of the formula to redistribute tax revenues and California State Lottery monies. (Att-01)

On November 1, 2008, the 2008-2009 school year enrollment for the Districts was 137,513 and for the VCOE schools was 2,800. (Att-03)

## **Methodology**

The Grand Jury requested information from all Districts and the VCOE concerning the personnel and related cost of administering their districts. The information requested included:

- listing of all positions working for, or charged to the district office
- salaries, non-salary compensation, and benefits
- print-out of added costs charged to the administration of the districts for the fiscal years 2006-2007 and 2007-2008
- financial data and pupil enrollment for 2006-2007 and 2007-2008

The Grand Jury requested information from the VCOE regarding:

- school district unification process
- Ventura County Committee on School District Organization

The Grand Jury also conducted interviews of VCOE staff.

## **Findings**

### **Ventura County Public Schools**

**F-01.** Ventura County has 203 schools comprised of 131 Elementary Schools, 28 Junior High/Middle Schools, 20 High Schools, 17 Alternative Schools, and 7 Charter Schools in the 20 public school districts: (Att-02)

- 11 Elementary - kindergarten through eighth grade
- 7 Unified – kindergarten through twelfth grade
- 2 High School – ninth through twelfth grade

**F-02.** As of November 2008, in the Districts there are a total of: (Att-03)

- 96 School Board Members/Trustees
- 20 Superintendents
- 36 Assistant Superintendents
- 27 Administrators
- 116 Directors
- 42 Managers/Supervisors
- 1,391 support staff assigned to the district offices

**Ventura County School Districts by Geographical Area**

**Northeast County**

**F-03.** In the **Briggs Elementary School District** there are: (Att-03)

- 2 schools
- 457 students for 2008-2009 school year
- 5 Trustees (compensation not reported)
- 1 Superintendent at approximately \$173,000
- 4 support staff at a total of approximately \$125,000
- non-salary compensation and benefits of approximately \$60,000
- miscellaneous expenses of approximately \$205,000
- approximate cost of administration per student (exclusive of Trustee compensation) is \$1,233 or 14.1% of the General Fund Revenues of \$8,723 per year per student ADA

**F-04.** In the **Fillmore Unified School District** there are: (Att-03)

- 7 schools
- 3,762 students for 2008-2009 school year
- 5 School Board Members at a total of approximately \$31,000
- 1 Superintendent at approximately \$178,000
- 3 Assistant Superintendents at a total of approximately \$363,000
- 5 Directors at approximately \$447,000
- 2 Managers/Supervisors at a total of approximately \$117,000
- 46 support staff at a total of approximately \$2,000,000
- non-salary compensation and benefits of approximately \$1,200,000
- miscellaneous expenses of approximately \$490,000
- approximate cost of administration per student is \$1,277 or 14.3% of the General Fund Revenues of \$8,944 per year per student ADA

**F-05.** In the **Mupu Elementary School District** there are: (Att-03)

- 1 school
- 127 students for 2008-2009 school year
- 3 Trustees (compensation not reported)
- 1 Superintendent/Principal at approximately \$21,000
- 1 support staff at roughly \$36,000
- non-salary compensation and benefits of approximately \$20,000
- miscellaneous expenses of approximately \$58,000
- approximate cost of administration per student (exclusive of Trustee compensation) is \$1,066 or 12.5% of the General Fund Revenues of \$8,508 per year per student ADA

**F-06. In the Santa Clara Elementary School District there are: (Att-03)**

- 1 school
- 55 students for 2008-2009 school year
- 3 Trustees (compensation not reported)
- 1 Superintendent//Principal at approximately \$34,000
- 1 support staff at approximately \$4,000
- non-salary compensation and benefits of approximately \$10,000
- miscellaneous expenses of approximately \$51,000
- approximate cost of administration per student (exclusive of Trustee compensation) is \$1,811 or 16.9% of the General Fund Revenues of \$10,725 per year per student ADA

**F-07. In the Santa Paula Elementary School District there are: (Att-03)**

- 7 schools
- 3,699 students for 2008-2009 school year
- 5 Trustees at a total of approximately \$48,000
- 1 Superintendent at approximately \$160,000
- 2 Assistant Superintendents at a total of approximately \$245,000
- 6 Directors at a total of approximately \$550,000
- 1 Administrator at approximately \$78,000
- 36 support staff at a total of approximately \$1,600,000
- non-salary compensation and benefits of approximately \$855,000
- miscellaneous expenses of approximately \$800,000
- approximate cost of administration per student is \$1,153 or 12% of the General Fund Revenues of \$9,578 per year per student ADA

**F-08. In the Santa Paula Union High School District there are: (Att-03)**

- 2 schools
- 1,661 students for 2008-2009 school year
- 5 Trustees at a total of approximately \$55,000
- 1 Superintendent at approximately \$190,000
- 1 Assistant Superintendent at approximately \$115,000
- 2 Directors at a total of approximately \$180,000
- 5 Managers/Supervisors at a total of approximately \$290,000
- 8 support staff at a total of approximately \$470,000
- non-salary compensation and benefits of approximately \$420,000
- miscellaneous expenses of approximately \$200,000
- approximate cost of administration per student is \$1,159 or 12.5% of the General Fund Revenues of \$9,296 per year per student ADA

**Southeast County**

**F-09.** In the **Conejo Valley Unified School District** there are: (Att-03)

- 29 schools
- 22,097 students for 2008-2009 school year
- 5 Board Members at a total of approximately \$82,000
- 1 Superintendent at approximately \$183,000
- 3 Assistant Superintendents at a total of approximately \$435,000
- 16 Directors at approximately a total of \$1,660,000
- 10 Managers/Supervisors at a total of approximately \$670,000
- 136 support staff at a total of approximately \$7,380,000
- non-salary compensation and benefits of approximately \$2,040,000
- miscellaneous expenses of approximately \$1,700,000
- approximate cost of administration per student is \$643 or 8% of the General Fund Revenues of \$8,042 per year per student ADA

**F-10.** In the **Oak Park Unified School District** there are: (Att-03)

- 7 schools
- 3,620 students for 2008-2009 school year
- 5 School Board Members (not compensated)
- 1 Superintendent at approximately \$165,000
- 2 Assistant Superintendents at a total of approximately \$259,000
- 6 Directors at a total of approximately \$545,000
- 23 support staff at a total of approximately \$1,000,000
- non-salary compensation and benefits of approximately \$450,000
- miscellaneous expenses of approximately \$710,000
- approximate cost of administration per student is \$880 or 10.9% of the General Fund Revenues of \$8,088 per year per student ADA

**Southwest**

**F-11.** In the **Hueneme Elementary School District** there are: (Att-03)

- 11 schools
- 7,988 students for 2008-2009 school year
- 5 Trustees at a total of approximately \$68,000
- 1 Superintendent at approximately \$185,000
- 2 Assistant Superintendents at a total of approximately \$255,000
- 8 Directors at a total of approximately \$815,000
- 69 support staff at a total of approximately \$3,700,000
- non-salary compensation and benefits of approximately \$1,800,000
- miscellaneous expenses of approximately \$610,000



- approximate cost of administration per student is \$926 or 10.8% of the General Fund Revenues of \$8,528 per year per student ADA

**F-12. In the **Ocean View Elementary School District** there are: (Att-03)**

- 4 schools
- 2,510 students for 2008-2009 school year
- 5 Governing Board Members at a total of approximately \$34,000
- 1 Superintendent at approximately \$146,000
- 3 Assistant Superintendents at a total of approximately \$350,000
- 2 Directors at a total of approximately \$180,000
- 5 Managers/Supervisors at a total of approximately \$300,000
- 36 support staff at a total of approximately \$1,300,000
- non-salary compensation and benefits of approximately \$800,000
- miscellaneous expenses of approximately \$497,000
- approximate cost of administration per student is \$1,316 or 14.4% of the General Fund Revenues of \$9,133 per year per student ADA

**F-13. In the **Oxnard Elementary School District** there are: (Att-03)**

- 20 schools
- 14,792 students for 2008-2009 school year
- 5 Trustees at approximately (compensation not reported)
- 1 Superintendent at approximately \$235,000
- 3 Assistant Superintendents at a total of approximately \$335,000
- 11 Administrators at a total of approximately \$1,055,000
- 5 Directors at a total of approximately \$410,000
- 1 Manager/Supervisor at approximately \$58,000
- 100 support staff at a total of approximately \$4,500,000
- non-salary compensation and benefits of approximately \$3,200,000
- miscellaneous expenses of approximately \$3,545,000
- approximate cost of administration per student (exclusive of Trustee compensation) is \$826 or 9.5% of the General Fund Revenues of \$8,638 per year per student ADA

**F-14. In the **Oxnard Union High School District** there are: (Att-03)**

- 9 schools
- 16,478 students for 2008-2009 school year
- 5 Trustees at a total of approximately \$70,000
- 1 Superintendent at approximately \$210,000
- 3 Assistant Superintendents at a total of approximately \$415,000
- 12 Directors at a total of approximately \$1,340,000

- 2 Managers/Supervisors at a total of approximately \$145,000
- 71 support staff at a total of approximately \$3,700,000
- non-salary compensation and benefits of approximately \$2,160,000
- miscellaneous expenses of approximately \$1,800,000
- approximate cost of administration per student is \$597 or 6.6% of the General Fund Revenues of \$9,045 per year per student ADA

**F-15. In the **Rio Elementary School District** there are: (Att-03)**

- 8 schools
- 4,150 students for 2008-2009 school year
- 5 Trustees at a total of approximately \$12,000
- 1 Superintendent at approximately \$192,000
- 3 Assistant Superintendents at a total of approximately \$370,000
- 4 Directors at a total of approximately \$383,000
- 1 Manager/Supervisor at approximately \$66,000
- 60 support staff at a total of approximately \$2,000,000
- non-salary compensation and benefits of approximately \$620,000
- miscellaneous expenses of approximately \$1,675,000
- approximate cost of administration per student is \$1,286 or 15.5% of the General Fund Revenues of \$8,275 per year per student ADA

**Central County**

**F-16. In the **Pleasant Valley Elementary School District** there are: (Att-03)**

- 13 schools
- 6,509 students for 2008-2009 school year
- 5 Trustees at a total of approximately \$55,000
- 1 Superintendent at approximately \$205,000
- 2 Assistant Superintendents at a total of approximately \$274,000
- 6 Directors at a total of approximately \$673,000
- 3 Managers/Supervisors at a total of approximately \$198,000
- 63 support staff at a total of approximately \$3,150,000
- non-salary compensation and benefits of approximately \$1,375,000
- miscellaneous expenses of approximately \$1,125,000
- approximate cost of administration per student is \$1,085 or 13.8% of the General Fund Revenues of \$7,829 per year per student ADA

**F-17. In the **Mesa Union Elementary School District** there are: (Att-03)**

- 2 schools
- 580 students for 2008-2009 school year

- 5 Trustees (compensation not reported)
- 1 Superintendent at approximately \$168,000
- 5 support staff at a total of approximately \$155,000
- non-salary compensation and benefits of approximately \$90,000
- miscellaneous expenses of approximately \$200,000
- approximate cost of administration per student (exclusive of Trustee compensation) is \$1,059 or 11.7% of the General Fund Revenues of \$9,045 per year per student ADA

**F-18.** In the **Somis Union Elementary School District** there are: (Att-03)

- 2 schools
- 310 students for 2008-2009 school year
- 5 Trustees (compensation not reported)
- 1 Superintendent/Principal at approximately \$32,000
- 5 support staff at a total of approximately \$150,000
- non-salary compensation and benefits of approximately \$75,000
- miscellaneous expenses of approximately \$195,000
- approximate cost of administration per student (exclusive of Trustee compensation) is \$1,450 or 16.8% of the General Fund Revenues of \$8,617 per year per student ADA

### **East County**

**F-19.** In the **Simi Valley Unified School District** there are: (Att-03)

- 29 schools
- 20,885 students for 2008-2009 school year
- 5 School Board Members at a total of approximately \$96,000
- 1 Superintendent at approximately \$256,000
- 2 Assistant Superintendents at a total of approximately \$340,000
- 10 Administrators at a total of approximately \$712,000
- 11 Directors at a total of approximately \$1,100,000
- 1 Manager/Supervisor at approximately \$52,000
- 150 support staff at a total of approximately \$11,700,000
- non-salary compensation and benefits of approximately \$6,200,000
- miscellaneous expenses of approximately \$1,600,000
- approximate cost of administration per student is \$1,022 or 13.6% of the General Fund Revenues of \$7,513 per year per student ADA

**F-20.** In the **Moorpark Unified School District** there are: (Att-03)

- 11 schools
- 7,317 students for 2008-2009 school year
- 5 School Board Members at a total of approximately \$75,000

- 1 Superintendent at approximately \$160,000
- 3 Assistant Superintendents at a total of approximately \$365,000
- 9 Directors at a total of approximately \$770,000
- 5 Managers/Supervisors at a total of approximately \$312,000
- 32 support staff at a total of approximately \$1,460,000
- non-salary compensation and benefits of approximately \$700,000
- miscellaneous expenses of approximately \$560,000
- approximate cost of administration per student is \$506 or 6.2% of the General Fund Revenues of \$8,162 per year per student ADA

**Northwest County**

**F-21.** In the **Ventura Unified School District** there are: (Att-03)

- 29 schools
- 17,428 students for 2008-2009 school year
- 5 School Board Members at a total of approximately \$67,000
- 1 Superintendent at approximately \$204,000
- 3 Assistant Superintendents at a total of approximately \$430,000
- 5 Administrators at a total of approximately \$500,000
- 19 Directors at a total of approximately \$1,600,000
- 6 Managers/Supervisors at a total of approximately \$374,000
- 270 support staff at a total of approximately \$11,000,000
- non-salary compensation and benefits of approximately \$5,260,000
- miscellaneous expenses of approximately \$1,825,000
- approximate cost of administration per student is \$1,191 or 14.3% of the General Fund Revenues of \$8,322 per year per student ADA

**F-22.** In the **Ojai Unified School District** there are: (Att-03)

- 9 schools
- 3,088 students for 2008-2009 school year
- 5 School Board Members at a total of approximately \$55,000
- 1 Superintendent at approximately \$153,000
- 1 Assistant Superintendent at approximately, 120,000
- 5 Directors at a total of approximately \$445,000
- 1 Manager/Supervisor at approximately \$70,000
- 38 support staff at a total of approximately \$1,800,000
- non-salary compensation and benefits of approximately \$970,000
- miscellaneous expenses of approximately \$375,000
- approximate cost of administration per student is \$1,285 or 14.3% of the General Fund Revenues of \$8,948 per year per student ADA

**F-23.** The following is a summary of the total district cost, enrollment, and cost per student.

### District Cost Comparisons

Districts	Total Cost	Enrollment 08/09	Cost per Student
<b>Briggs Elementary</b>	\$563,333	457	\$1,233
<b>Conejo Valley Unified</b>	14,212,468	22,097	643
<b>Fillmore Unified</b>	4,805,695	3,762	1,277
<b>Hueneme Elementary</b>	7,397,731	7,988	926
<b>Mesa Union Elementary</b>	614,088	580	1,059
<b>Moorpark Unified</b>	4,408,461	7,317	602
<b>Mupu Elementary</b>	135,413	127	1,066
<b>Oak Park Unified</b>	3,185,537	3,620	880
<b>Ocean View Elementary</b>	3,302,452	2,510	1,316
<b>Ojai Unified</b>	3,967,717	3,088	1,285
<b>Oxnard Elementary</b>	13,305,697	14,792	900
<b>Oxnard Union High</b>	9,829,651	16,478	597
<b>Pleasant Valley Elementary</b>	7,060,848	6,509	1,085
<b>Rio Elementary</b>	5,336,653	4,150	1,286
<b>Santa Clara Elementary</b>	99,613	55	1,811
<b>Santa Paula Elementary</b>	4,344,789	3,699	1,175
<b>Santa Paula Union High</b>	1,924,541	1,661	1,159
<b>Simi Valley Unified</b>	22,047,909	20,885	1,056
<b>Somis Union Elementary</b>	449,411	310	1,450
<b>Ventura Unified</b>	21,248,215	17,428	1,219
<b>Total for all Districts</b>	<b>\$128,240,222</b>	<b>137,513</b>	
Average cost per student for all Districts			\$933

**Ventura County Office of Education (VCOE)**

**F-24.** In the **VCOE** there are: (Att-03)

- 5 special needs schools – kindergarten through twelfth grade
- 15 special day-class programs on public school sites
- 2,800 students for 2008-2009 school year
- 5 Trustees at \$55,000
- 1 Superintendent at approximately \$210,000
- 4 Assistant Superintendents at a total of approximately \$625,000
- 20 Directors at a total of approximately \$2,300,000
- 23 Managers/Supervisors at a total of approximately \$2,000,000
- 140 support staff at a total of approximately \$6,800,000
- non-salary compensation and benefits of approximately \$3,500,000
- cost per VCOE student is not relevant to this study

**F-25.** The VCOE operates many support departments such as Information & Technology, Facilities, Purchasing, and Transportation; some of the Districts utilize these services.

**F-26.** The VCCSDO makes recommendations on organization and reorganizations of school districts, the transfer of territory between and/or among school districts, the number of trustees, and the manner by which they are elected. (Att-06)

**Conclusions**

**C-01.** The cost of administering Ventura County's 20 public school districts is approximately \$128,240,000: (Att-03) (F-01 through F-22)

- average administrative cost as reported is \$933 per year per student
- there are over 240 administrators at a cost of approximately \$24,000,000 per year, not counting benefits and non-salary compensation
- there are 1,400 support staff at a cost of approximately \$57,000,000 per year, not counting benefits and non-salary compensation
- total non-salary compensation and medical benefits are approximately \$31,457,000
- miscellaneous cost of materials, supplies, travel and conferences, staff development, dues and memberships, rentals and leases, professional consultants, audit, business service authority, employment fees, legal services, postage, miscellaneous insurance, etc. is approximately \$18,250,000 per year
- total cost of the sixty reported school board members and trustees is approximately \$760,000 per year including benefits and non-

salary compensation (exclusive of non-reported Trustee compensation)

- C-02.** Unification/consolidation of some of the County's 20 public school districts could significantly reduce administrative costs which, in turn, could be used to maintain classroom programs and teachers. (Att-07) (F-01 through F-22)
- C-03.** Combining some District support functions at the VCOE could reduce the cost of operating Districts. (F-23, F-24)

## **Recommendations**

- R-01.** The Grand Jury recommends that the VCOE, the Districts, and the VCCSDO should investigate ways to consolidate or unify some of the 20 public school districts with the potential to save millions of dollars in administrative costs. Some suggestions are as follows: (C-01, C-02)
- consolidate/unify Briggs Elementary, Mupu Elementary, Santa Paula Elementary, Santa Paula Union High, and Santa Clara Elementary
  - consolidate Ojai Unified and Ventura Unified
  - consolidate/unify Hueneme Elementary, Ocean View Elementary, Oxnard Elementary, Oxnard Union High, and Rio Elementary
  - consolidate/unify Mesa Union Elementary, Pleasant Valley Elementary, and Somis Union Elementary
  - consolidate Conejo Valley Unified and Oak Park Unified
  - consolidate Moorpark Unified and Simi Valley Unified
- Different consolidations or unifications could achieve similar savings.
- R-02** The Grand Jury recommends that the VCOE should coordinate efforts with individual districts to consolidate support services, such as, Information and Technology, Purchasing, Facilities, and Transportation to help reduce costs for all of the Districts and the VCOE. (C-03)

## **Responses**

### Responses Required From:

Ventura County Superintendent of Schools (R-01, R-02)

Ventura County Board of Education (R-01, R-02)

Board of Trustees Briggs Elementary School District (R-01, R-02)

Board of Education Conejo Valley Unified School District (R-01, R-02)

Board of Education Fillmore Unified School District (R-01, R-02)

Board of Trustees Hueneme Elementary School District (R-01, R-02)

Board of Trustees Mesa Union Elementary School District (R-01, R-02)

Board of Education Moorpark Unified School District (R-01, R-02)

Board of Education Oak Park Unified School District (R-01, R-02)

Governing Board Ocean View Elementary School District (R-01, R-02)  
Board of Education Ojai Unified School District (R-01, R-02)  
Board of Trustees Oxnard Elementary School District (R-01, R-02)  
Board of Trustees Oxnard Union High School District (R-01, R-02)  
Board of Trustees Pleasant Valley Elementary (R-01, R-02)  
Board of Trustees Rio Elementary School District (R-01, R-02)  
Board of Trustees Santa Clara Elementary School District (R-01, R-02)  
Board of Trustees Santa Paula Elementary School District (R-01, R-02)  
Board of Trustees Santa Paula Union High School District (R-01, R-02)  
Board of Education Simi Valley Unified School District (R-01, R-02)  
Board of Trustees Somis Union Elementary School District (R-01, R-02)  
Board of Education Ventura Unified School District (R-01, R-02)

**Responses Requested From:**

Ventura County Committee on School District Organization (R-01)

**Attachments**

- Att-01.** Average Daily Attendance Definition
- Att-02.** List of Ventura County Public Schools
- Att-03.** Summary of Responses Received from all School Districts and the VCOE
- Att-04.** Ventura County School Districts Map
- Att-05.** Potential Consolidations/Unifications Map
- Att-06.** Information on the Ventura County Committee on School District Organization
- Att-07.** Potential Administrative Cost Savings from the Recommended Consolidations/Unifications



**Attachment – 01**  
**Average Daily Attendance Definition**

*(This page intentionally blank)*

## **Average Daily Attendance**

### **Provided by the Ventura County Office of Education**

"ADA means that the student was in class for every school day. If a student is not in school (for any reason) the school loses the credit for that day. For example – a student is enrolled on day 1 of school, then the student is sick for 4 days during the year, and the student also takes a family vacation and is out for 5 additional days. That student only attended 171 days out of 180 possible school days. Therefore, the student generated .95 ADA (171 divided by 180).

There is a little more to it than that, but that is the basic formula.

Many (not all) revenues are ADA based. The largest source of unrestricted revenues - the Revenue Limit - is ADA based. Basically, the formula is "Revenue Limit amount times ADA". The district can use the current year ADA or the prior year ADA, whichever is greater. That helps protect a district with declining enrollment.

Another revenue source that is ADA based is Lottery. Lottery funds are distributed on a per ADA basis."

*(This page intentionally blank)*

**Attachment – 02**  
**List of Ventura County Public Schools**

*(This page intentionally blank)*

Ventura County Public Schools Directory 2008-2009

3

## VENTURA COUNTY SCHOOLS

Number of School Districts .....	21
Number of Schools .....	208
Elementary Schools .....	131
Junior High/Middle Schools .....	28
High Schools .....	20
Alternative .....	22
Charter Schools .....	7
Total Student Enrollment <sup>1</sup> .....	141,260
Number of Educators (full time equivalents) .....	6,673

School District	Grade Span	# of Schools	Enrollment
Briggs Elementary	Kgn-8	2	425
Conejo Valley Unified	Kgn-12	29	21,209
Fillmore Unified	Kgn-12	7	3,812
Hueneme Elementary	Kgn-8	11	8,091
Mesa Union Elementary	Kgn-8	2	1,210
Moorpark Unified	Kgn-12	11	7,418
Mupu Elementary	Kgn-8	1	127
Oak Park Unified	Kgn-12	7	3,714
Ocean View Elementary	Kgn-8	4	2,476
Ojai Unified	Kgn-12	9	3,225
Oxnard Elementary	Kgn-8	20	15,281
Oxnard Union High	9-12	9	16,868
Pleasant Valley Elementary	Kgn-8	12	7,151
Rio Elementary	Kgn-8	8	4,150
Santa Clara Elementary	Kgn-6	1	53
Santa Paula Elementary	Kgn-8	7	3,673
Santa Paula Union High	9-12	2	1,698
Simi Valley Unified	Kgn-12	29	21,137
Somis Union Elementary	Kgn-8	2	527
Ventura Unified	Kgn-12	30	17,321
VCOE	Kgn-12	5	1,538
California Youth Authority			156

<sup>1</sup>Source: California Department of Education  
Educational Demographics Unit 2007-2008

*(This page intentionally blank)*



**Attachment -03**  
**Summary of Responses Received from all School Districts**  
**and the VCOE**

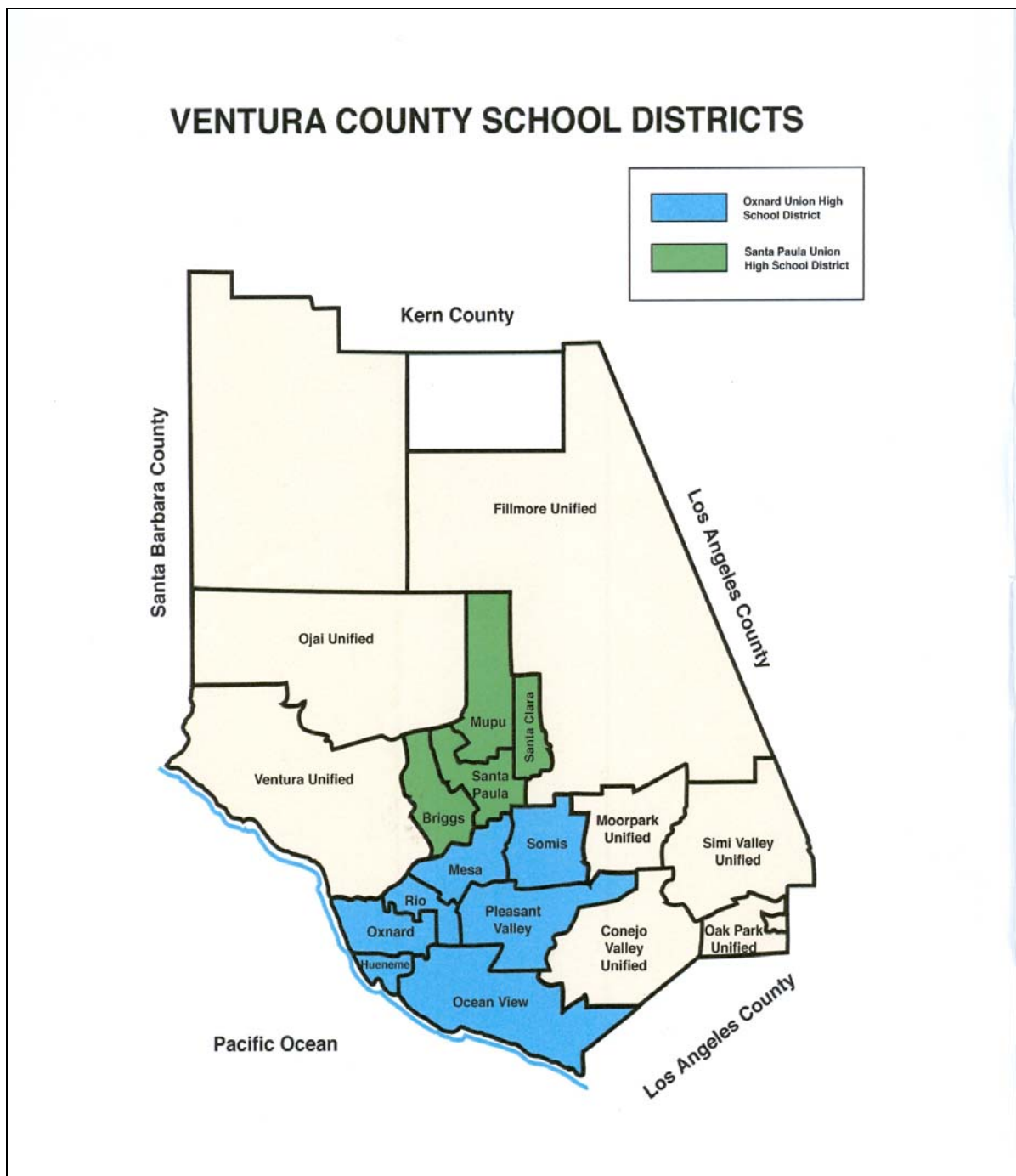
*(This page intentionally blank)*

Summary of Responses Received from all School Districts and the VCOE for 2007-2008																							
District	Trustees	Trustees Benefits	Ct.	Superintendent	Sup. Compensation	Asst. Superintendent	CT.	Administrator	CT.	Directors	CT.	Management/Supervisor	CT.	Certificated Emp.	CT.	Classified Emp.	CT.	Non-Salary Compensation	Benefits	*** Misc. Cost	Total Cost	Enrollment 08/09	Cost per Student
Briggs Elementary			5	\$144,430	\$28,601											\$124,768	4	\$33,090	\$27,936	\$204,508	\$563,333	457	\$1,233
Conejo Valley Unified	32,160	59,690	5	175,000	8,400	434,941	3			1,663,901	16	669,211	10	1,040,787	13	6,344,095	123	126,540	1,918,262	1,701,867	14,212,468	22,097	643
Fillmore Unified		30,691	5	147,351	30,311	362,896	3			447,480	5	116,802	2	439,182	6	1,546,548	40	1,192,985		491,449	4,805,695	3,762	1,277
Hueneme Elementary	14,000	54,260	5	154,640	29,977	255,043	2			814,775	8			1,170,715	14	2,514,926	55	1,009,626	768,814	610,955	7,397,731	7,988	926
Mesa Union Elementary			5	146,231	22,671											156,208	5	49,105	38,027	201,846	614,088	580	1,059
Moorpark Unified	14,400	61,150	5	149,018	10,258	365,223	3			772,213	9	312,376	5	169,175	2	1,294,164	30	63,397	635,960	561,127	4,408,461	7,317	602
Mupu Elementary			3	20,569												35,640	1	10,850	10,050	58,304	135,413	127	1,066
Oak Park Unified			5	164,877		258,965	2			544,983	6			393,438	5	661,927	18	27,792	419,892	713,663	3,185,537	3,620	880
Ocean View Elementary		33,340	5	145,600		349,028	3			178,572	2	302,239	5	66,767	1	1,230,263	35	27,500	472,087	497,056	3,302,452	2,510	1,316
Ojai Unified		54,475	5	152,270		120,827	1			444,141	5	70,404	1	370,067	7	1,408,073	31	542,940		430,251	374,270	3,088	1,285
Oxnard Elementary			5	195,907	38,661	336,905	3	1,054,021	11	408,335	5	58,221	1			4,478,848	100		3,162,687	3,545,762	13,305,697	14,792	900
Oxnard Union High	29,170	43,082	5	177,354	36,737	414,940	3			1,337,282	12	146,180	2			3,687,975	71	2,158,883		1,798,049	9,829,651	16,478	597
Pleasant Valley Elementary	14,000	39,218	5	182,050	23,648	273,600	2			672,913	6	197,862	3	96,094	1	3,061,670	62	877,729	497,762	1,124,302	7,060,848	6,509	1,085
Rio Elementary	12,000		5	165,000	26,788	370,103	3			382,861	4	66,170	1	376,467	14	1,637,451	46	620,055		1,679,758	5,336,653	4,150	1,286
Santa Clara Elementary **			3	22,587	11,635											3,914	1	424	9,600	51,453	99,613	55	1,811
Santa Paula Elementary	14,400	33,932	5	155,000	4,800	245,183	2	78,007	1	551,664	6			264,378	4	1,335,555	32	12,000	844,323	803,888	4,344,789	3,699	1,175
Santa Paula Union High	15,000	40,078	5	159,794	29,231	114,694	1			180,356	2	290,116	5	135,772	2	331,470	6	216,054	205,992	205,984	1,924,541	1,661	1,159
Simi Valley Unified	26,460	70,154	5	206,104	50,021	340,084	2	712,486	10	1,084,852	11	51,970	1	4,216,257	59	7,474,418	191	354,585	5,835,228	1,596,225	22,047,909	20,885	1,056
Somis Union Elementary *			5	31,700												147,285	5	35,935	38,729	195,762	449,411	310	1,450
Ventura Unified	24,000	42,527	5	173,009	31,208	428,160	3	500,019	5	1,596,496	19	373,826	6	2,615,168	52	8,373,964	218	2,970,524	2,293,093	1,826,221	21,248,215	17,428	1,219
Total for all Districts	\$195,590	\$562,597	96	\$2,868,491	\$382,947	\$4,670,592	36	\$2,344,533	27	\$11,080,824	116	\$2,655,376	42	\$11,354,267	180	\$45,849,162	1074	\$10,330,014	\$17,608,693	\$18,242,449	\$128,240,222	137,513	\$933
VCOE	0	54,895	5	177,842	33,155	626,001	4			2,273,878	20	1,956,959	23	517,142	8	6,351,052	129		3,518,714		15,509,638	2,800	
Total with VCOE	\$195,590	\$617,492	101	\$3,046,333	\$416,102	\$5,296,593	40	\$2,344,533	27	\$13,354,702	136	\$4,612,335	65	\$11,871,409	188	\$52,200,214	1,203	\$10,330,014	\$21,127,407	\$18,242,449	\$143,749,860	140,313	
* Somis has a consultant as a superintendent.																							
** at 25% of listed salary due to other duties																							
*** Misc. Cost (Materials/Supplies, Travel & Conferences, Staff Development, Dues & Memberships, Rentals & Leases, Consultants, Audit, Business Service authority, Employment Fees, Legal services, Postage, Misc. Insur.etc.)																							
All information obtained from the School Districts and the Ventura County Office of Education.																							

Summary of all Responses Received from all School Districts and the VCOE (Misc Cost 06-07)																					
Fund 010-General Fund	Briggs	Conejo	Fillmore	Hueneme	Mesa Union	Moorpark	Mupu	Oak Park	Ocean View	Ojai Unified	Oxnard El	OUHSD	Pleasant Valley	Rio Elementary	Santa Clara	Santa Paula	SPUH	Simi Valley	Somis Union	Ventura Unified	
1105 - Teacher sub.																		5,150		4,559	
1121 - Cert. Sub.									1,285												
1122 - Teacher Extra Help											8,720										
1901 - Teacher Trainer											103,961										
1903 - Cert. Hourly																				67	
1904 - Other Cert. Stipend										7,670											
2201 - Class. Extra Help													2,201	6,009							
2202 - Class. Sub.										120								979		110	
2203 - Class. O.T.																		8,284		40	
2205 - Class Sub																		2,460			
2206 - Class Support Sub.																				16,792	
2223 - Extra Duty																751					
2260 - Class. Support Extra Pay			200																		
2401 - Clerical Extra Help													48,561	8,533							
2402 - Clerical Sub.																1,667					
2403 - Clerical Extra Duty												28,752				32,451		18,993			
2404 - Clerical Temp.																		2,134			
2460 - Clerical, Tech & Office Extra Pay			6,419															6,512			
2460 - Wellness Bonus																			300		
2412 - Class. Sub.																2,518					
2415 - Clerk/Office O.T.		33,987														2,195					
2901 - Student Workers																	3,502				
2902 - Other Class. Hrly.		10,031																7,169			
2903 - Class. Extra Duty										238										2,537	
2905 - Class. Specialists		87																			
2920 - Class. Retiree Cons.												10,649									
3299 - Pers Golden Handshake													29,120								
3902 - Other Benefits		3,888	1,328	6,008	510			12,097	23,807	6,000	135,260	288,978	1,860								
4300 - Materials & Supplies	7,282	312,132	55,536	76,510	2,492	33,691		101,882	115,149	53,791	81,338	123,684	88,677	188,358		36,000	20,663	211,279	2,059	216,290	
5200 -Travel & Conferences	1,065	59,000	23,482	49,329	34	24,694		26,170	39,657	29,111	64,463	59,342	33,258	28,427		18,165	21,671	26,775		78,467	
5210 - Mileage		8,794	1,200			94,388			600	10,860	11,337			13,600		32,196				47,366	
5220 - Staff Development	11,352				6,048		180								40				2,174		
5300 - Dues & Memberships	9,710	46,296	19,780	18,342	6,383	17,799	893	16,247	17,756	25,830	71,010	23,248	32,435	14,657	2,271	14,094	17,397	1,982	3,863	41,000	
5600 - Rentals, Leases	6,013	140,645	23,574	30,998	1,868	16,113		21,031	20,516	12,342	65,888	35,065	4,700				6634	203,007	1,277	385,821	
5610 - Contracts & Repairs		365,042				38,448			11,350	3,973	11,235	35,876	57,690	819		118					
5631 - Maintenance Agreements											400,271										
5800 - Professnl/Consult Serv &Opera.	22,575		91,579	429,768	28,674	10,062	11,853		205,719	172,194	2,581,801	713,841		473,112	7,288	152,245	132,177	1,051,016	15,432	810,678	
5801 - Audit	15,069	13,550	25,809		15,997	43,925	11,717			14,865		106,844		20,741	11,708	52,335			9,647		
5803 - Business Services Authority	124,906				124,879	32,779									30024				124,909		
5804 - Employment Fees	4,748				1,318		768								84	5,689	3940	33,925	2,077	25,776	
5820 - Other Opert. Expense								470,074													
5830 - County Contracts		297,642				68,170															
5855 - Advertising		22,190				3,834						10,908				2942				17595	
5810 - Other Services		272,614	140,131			178,702				4,264		130,466	825,800	88,714				453			
5890 - Other Recruitment		72,291																			
5899 - Legal Services	1,087	43,678	102,411		13,052	25,690	114	66,162	37,213	33,012		230,396		809,208		450,522		21,257	33,492	183,682	
5903 -Postage	701				591	5,611			25,289		10,478			27580	38				532		
Total For All Districts	\$204,508	\$1,701,867	\$491,449	\$610,955	\$201,846	\$561,127	\$58,304	\$713,663	\$497,056	\$374,270	\$3,545,762	\$1,798,049	\$1,124,302	\$1,679,758	\$51,453	\$803,888	\$205,984	\$1,596,225	\$195,762	\$1,826,221	\$18,242,449

**Attachment – 04**  
**Ventura County School Districts Map**

*(This page intentionally blank)*

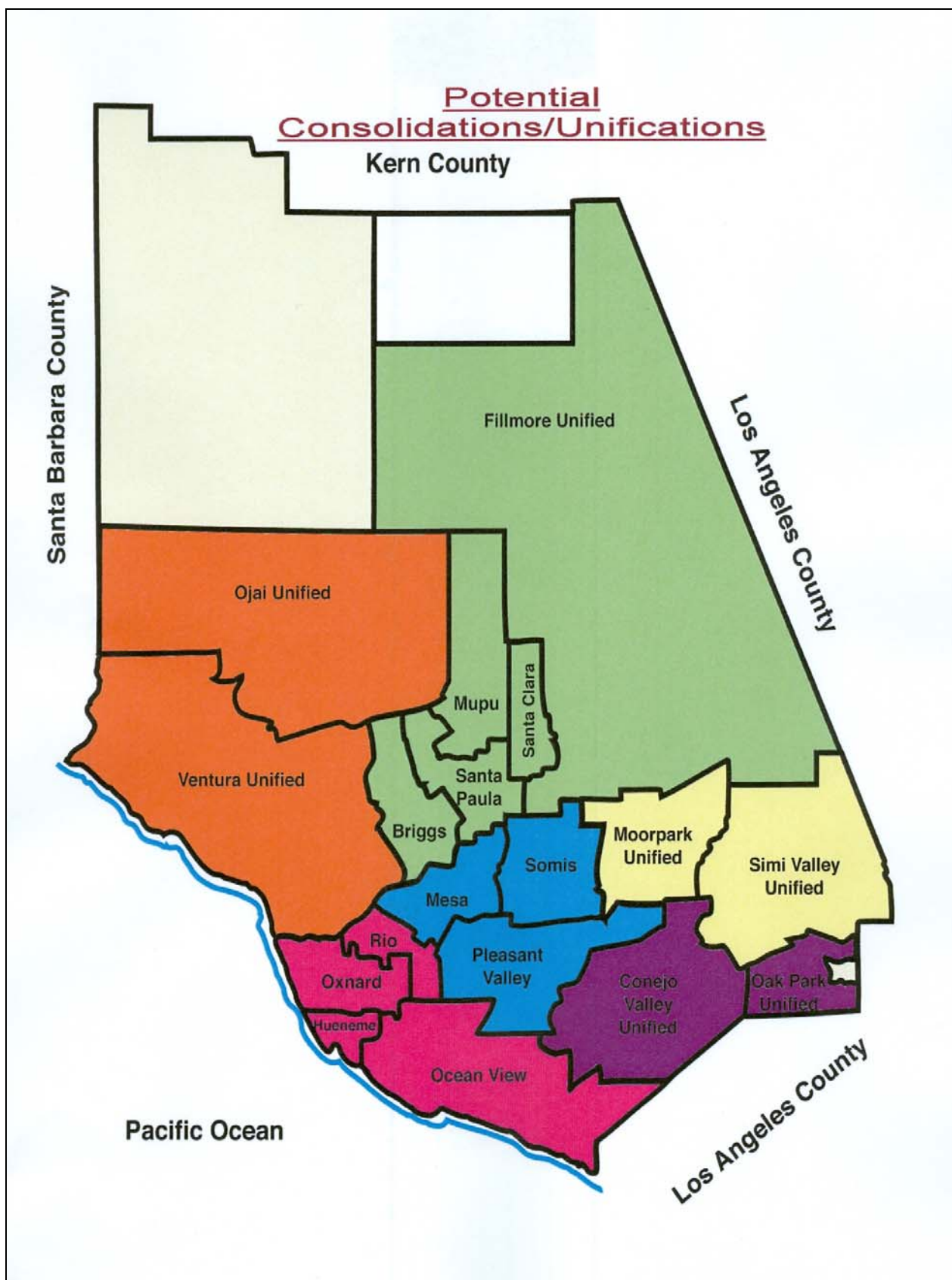


*(This page intentionally blank)*



**Attachment – 05**  
**Potential Consolidations/Unifications Map**

*(This page intentionally blank)*



*(This page intentionally blank)*

**Attachment – 06**  
**Information on the Ventura County Committee on School District  
Organization**

*(This page intentionally blank)*



**Administration**  
5189 Verdugo Way  
Camarillo, CA 93012  
805-383-1902 • FAX: 805-383-1908  
www.vcoe.org

## VENTURA COUNTY OFFICE OF EDUCATION

Stanley C. Mantooth, County Superintendent of Schools

### VENTURA COUNTY COMMITTEE ON SCHOOL DISTRICT ORGANIZATION

#### Questions and Answers

1. ***What is the County Committee on School District Organization?***

The County Committee was created by the California State Legislature in 1949. It functions within the rules and regulations established by the Legislature and its own policies and procedures. It responds to petitioners and School District Governing Boards. Its duties and responsibilities pertain to School Districts – Kindergarten through Community Colleges. The County Committee's activities are coordinated by the County Superintendent of Schools, and its actions are reported to the State Board of Education.

2. ***Who serves on the County Committee?***

The County Committee on School District Organization consists of eleven members – two representatives from each Supervisorial District and one member serving at large. Committee members are elected at an Annual Meeting of School Trustee Representatives. The term of office is four years. The members serve without pay. In some counties, the County Board of Education acts as the County Committee on School District Organization.

3. ***What are the Board responsibilities of the County Committee?***

The County Committee studies and makes recommendations in the areas of:

- a. The organization and reorganization of school districts.
- b. The transfer of territory between and/or among school districts.
- c. The number of trustees and the manner by which they are elected.

4. ***How often does the County Committee meet?***

The County Committee must have one organizational meeting each year within 30 days of the annual election. Some County Committees meet on a regular basis and others hold their meetings on an as-needed basis called by the Chairperson or by a majority of the County Committee members. The meetings are subject to the provisions of the Brown Act.

*"Commitment to Quality Education for All"*

5. *How do items get on the County Committee's agenda?*

The County Superintendent of Schools or designee serves as Secretary to the County Committee and prepares the agenda. Agenda items are originated by or submitted to the County Superintendent of Schools. Official minutes of each County Committee Meeting must be kept and made available according to the rules and regulations of the Committee and are available at the County Superintendent of Schools Office.

6. *How are new districts organized and reorganized?*

The formation of new districts is a major responsibility of the County Committee. By legislative direction, the County Committee is to give primary consideration to the formation of unified districts. The County Committee must recommend action that dissolves unified school districts and may become involved if lapsation alters the Master Plan. In addition, the County Committee may act to annex or transfer all or part of the territory from one district to another.

7. *How is organization and reorganization action initiated?*

Action is initiated by a registered voter petition or request from a School District Governing Board. After a study is made, a tentative plan is formulated and the required number of public hearings are held. A report and recommendation are submitted to the appropriate agency (County Board of Supervisors, Board of Governors of the California Community Colleges, or State Board of Education).

8. *How may transfer of territory be accomplished?*

A request to transfer **inhabited** territory from one district to another is initiated by a petition from the resident(s) of an area or by the Governing Boards of the affected school districts. A request to transfer **uninhabited** territory is initiated by a petition from the Governing Boards of the affected school districts or the owner of the territory. After the County Committee has studied the requested transfer and held a hearing on the matter, a report and recommendation are sent to the County Board of Supervisors or the State Board of Education.

9. *What are the requirements for a citizens' petition?*

Any petition submitted shall include what is proposed, the geographical area involved, the reason(s) for the petition, and the districts affected. The number of signatures varies, depending on the type of action proposed.



Proposed Action	Number of Signatures Required
Formation of a new district	10% or 25% of registered electors of the proposed district.
Unification and other forms of reorganization	10% or 25% of registered electors of the proposed district.
Transfer of territory between/among districts	10% or 25% of the registered electors residing in the proposed territory to be transferred. If the territory is uninhabited, the owner may petition.

10. *Where is the specific authority for the County Committee?*

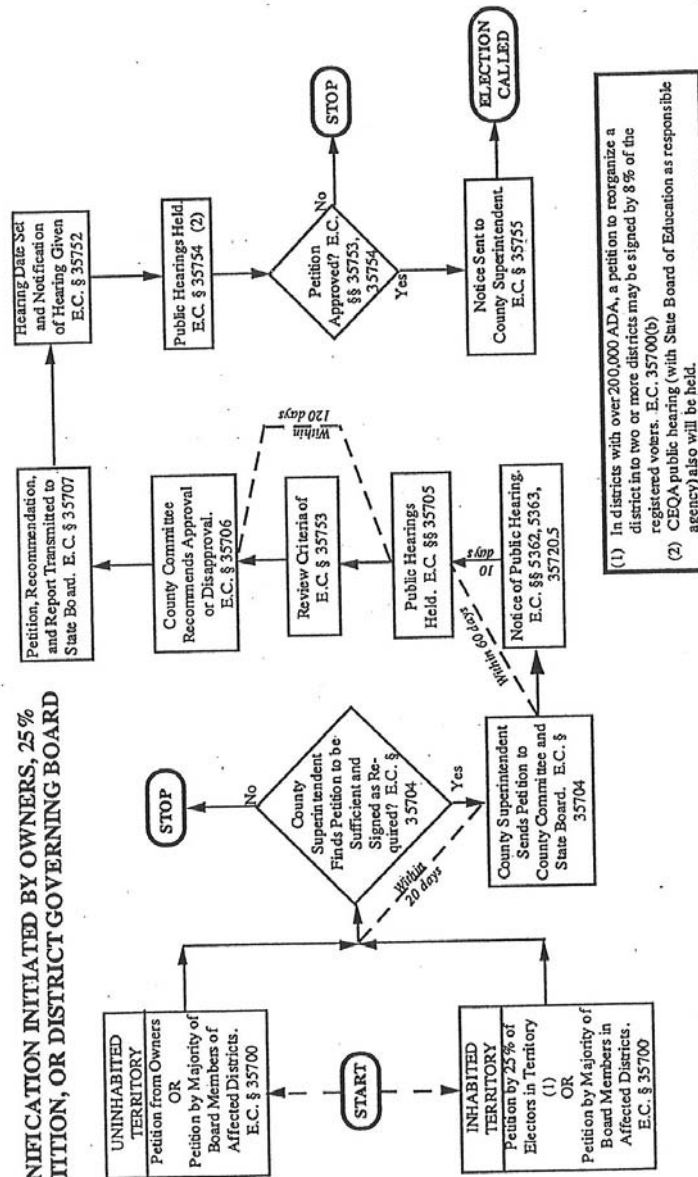
The California Education Code.

11. *Where can I get specific answers to questions about the County Committee?*

- ♦ From the California Department of Education's website at:  
[www.cde.ca.gov/re/lr/do](http://www.cde.ca.gov/re/lr/do)
- ♦ From the Ventura County Office of Education's website at: [www.vcoe.org](http://www.vcoe.org)
  - Click on *Administrative Services* space bar; and
  - Click on *School District Organization* (located at left-hand side of screen).

L:/Wade/My Docs/VCCSDO/VCCSDO Questions and Answers.doc

### UNIFICATION INITIATED BY OWNERS, 25% PETITION, OR DISTRICT GOVERNING BOARD



### **CRITERIA FOR APPROVAL OF REORGANIZATION PROPOSALS**

The following criteria are based on Education Code Section 35753:

1. The new districts will be adequate in terms of number of pupils enrolled.
2. The districts are each organized on the basis of a substantial community identity.
3. The proposal will result in an equitable division of property and facilities of the original district or districts.
4. The reorganization of the districts will not promote racial and ethnic discrimination or segregation.
5. The proposed reorganization will not result in any substantial increase in costs to the State.
6. The proposed reorganization will not significantly disrupt the educational programs in the proposed districts and districts affected by the proposed reorganization and will continue to promote sound educational performance in those districts.
7. The proposed reorganization will not result in a significant increase in school housing costs.
8. The proposed reorganization is not primarily designed to result in a significant increase in property values causing financial advantage to property owners because territory was transferred from one school district to an adjoining district.
9. The proposed reorganization will not cause a substantial adverse effect on the fiscal management or fiscal status of the proposed district or any existing district affected by the proposed reorganization.

The State Board of Education may approve a proposal of the reorganization of school districts if the Board determines that it is not practicable or possible to apply the criteria of this section literally and that an exceptional situation exists that warrants approval of the proposals.

L:/Wade/My Docs/VCCSDO/Criteria for Approval of Reorganization.doc

*(This page intentionally blank)*

**Attachment 7**  
**Potential Administrative Cost Savings from the Recommended  
Consolidations/Unifications**

*(This page intentionally blank)*

Potential Administrative Cost Savings from the Recommended Consolidations/Unifications																												
District	Trustees	Trustees Benefits	# Of	Personnel Comm.	P.C. Benefits	# Of	Superintendent	Sup. Compensation	Asst. Superintendent	# Of	Administrator	#Of	Directors	# Of	Management/Supervisor	# Of	Certificated Emp.	# Of	Classified Emp.	# Of	Compensation	Benefits	Misc. Cost	Total Cost	Enrollment 08/09	Cost per Student		
Scenario 2																												
Briggs Elementary	0	0	5				144,430	28,601												124,768	4	33,090	27,936	204,508	563,333	457	1,233	
Fillmore Unified	0	30,691	5				147,351	30,311	362,896	3			447,480	5	116,802	2	439,182	6	1,546,548	40	1,192,985		491,449	4,805,695	3,762	1,277		
Mupu Elementary	0	0	3				20,569													35,640	1	10,850	10,050	58,304	135,413	127	1,066	
Santa Paula Elementary	14,400	33,932	5	1,500	159	3	155,000	4,800	245,183	2	78,007	1	551,664	6			264,378	4	1,335,555	32	12,000	844,323	803,888	4,344,789	3,699	1,175		
Santa Paula Union High	15,000	40,078	5				159,794	29,231	114,694	1			180,356	2	290,116	5	135,772	2	331,470	6	216,054	205,992	205,984	1,924,541	1,661	1,159		
Santa Clara Elementary *	0	0	3				22,587	11,635												3,914	1	424	9,600	51,453	99,613	55	1,811	
Total for all Districts	\$29,400	\$104,701	26	\$1,500	159	3	\$649,731	\$104,578	\$722,773	6	\$78,007	1	1,179,500	13	\$406,918	7	\$839,332	12	\$3,377,895	84	\$1,465,403	\$1,097,901	\$1,815,586	11,873,384	9,761	\$1,216		
Santa Paula Unified	14,400	33,932	5	1,500	159	3	155,000	4,800	245,183	2	78,007	1	551,664	6			264,378	4	1,335,555	32	12,000	844,323	793,373	4,334,274	9,761	444		
Potential Savings	15,000	70,769	21	0	0	0	494,731	99,778	477,590	4	0	0	627,836	7	406,918	7	574,954	8	2,042,340	52	1,453,403	253,578	1,022,213	7,539,110	9,761	772		
Scenario 2																												
District	Trustees	Trustees Benefits	# Of	Personnel Comm.	P.C. Benefits	# Of	Superintendent	Sup. Compensation	Asst. Superintendent	# Of	Administrator	#Of	Director's	# Of	Management/Supervisor	# Of	Certificated Emp.	# Of	Classified Emp.	# Of	Compensation	Benefits	Misc. Cost	Total Cost	Enrollment 08/09	Cost per Student		
Ojai Unified	0	54,475	5				152,270		120,827	1			444,141	5	70,404	1	370,067	7	1,408,073	31	542,940	430,251	374,270	3,967,717	3,088	1,285		
Ventura Unified	24,000	42,527	5				173,009	31,208	428,160	3	500,019	5	1,596,496	19	373,826	6	2,615,168	52	8,373,964	218	2,970,524	2,293,093	1,826,221	21,248,215	17,428	1,219		
Total for all Districts	\$24,000	\$97,002	10	0	0	0	\$325,279	\$31,208	\$548,987	4	\$500,019	5	\$2,040,637	24	\$444,230	7	\$2,985,235	59	\$9,782,037	249	\$3,513,464	\$2,723,344	\$2,200,491	25,215,932	20,516	\$1,229		
Ventura Unified	24,000	42,527	5				173,009	31,208	428,160	3	500,019	5	1,596,496	19	373,826	6	2,615,168	52	8,373,964	218	2,970,524	2,293,093	1,977,678	21,399,672	20,516	1,043		
Potential Savings	0	54,475	5				152,270	0	120,827	0	0	0	444,141	0	70,404	0	370,067	0	1,408,073	0	542,940	430,251	222,813	3,816,260	20,516	186		
Scenario 3																												
District	Trustees	Trustees Benefits	# Of	Personnel Comm.	P.C. Benefits	# Of	Superintendent	Sup. Compensation	Asst. Superintendent	# Of	Administrator	#Of	Director's	# Of	Management/Supervisor	# Of	Certificated Emp.	# Of	Classified Emp.	# Of	Compensation	Benefits	Misc. Cost	Total Cost	Enrollment 08/09	Cost per Student		
Hueneme Elementary	14,000	54,260	5				154,640	29,977	255,043	2			814,775	8		0	1,170,715	14	2,514,926	55	1,009,626	768,814	610,955	7,397,731	7,988	926		
Ocean View Elementary	0	33,340	5				145,600		349,028	3			178,572	2	302,239	5	66,767	1	1,230,263	35	27,500	472,087	497,056	3,302,452	2,510	1,316		
Oxnard Elementary	0	0	5				195,907	38,661	336,905	3	1,054,021	11	408,335	5	58,221	1			4,478,848	100		3,162,687	3,545,762	13,279,347	14,792	898		
Oxnard Union High	29,170	43,082	5				177,354	36,737	414,940	3			1,337,282	12	146,180	2			3,687,975	71	2,158,883		1,798,049	9,829,651	16,478	597		
Rio Elementary	12,000	0	5				165,000	26,788	370,103	3			382,861	4	66,170	1	376,467	14	1,637,451	46	620,055		1,679,758	5,336,653	4,150	1,286		
Total for all Districts	\$55,170	\$130,682	25	0	0	0	\$838,501	\$132,163	\$1,726,019	14	\$1,054,021	11	\$3,121,825	31	\$572,810	9	\$1,613,949	29	\$13,549,463	307	\$3,816,064	\$4,403,588	\$8,131,580	39,145,834	45,918	\$853		
Oxnard Unified	0	0	5				195,907	38,661	336,905	3	1,054,021	11	408,335	5	58,221	1			4,478,848	100		3,162,687	3,078,419	12,812,004	45,918	279		
Potential Savings	55,170	130,682	20	0	0	0	642,594	93,502	1,389,114	11	0	0	2,713,490	26	514,589	8	1,613,949	29	9,070,615	207	3,816,064	1,240,901	5,053,161	26,333,830	45,918	573		
Scenario 4																												
District	Trustees	Trustees Benefits	# Of	Personnel Comm.	P.C. Benefits	# Of	Superintendent	Sup. Compensation	Asst. Superintendent	# Of	Administrator	#Of	Director's	# Of	Management/Supervisor	# Of	Certificated Emp.	# Of	Classified Emp.	# Of	Compensation	Benefits	Misc. Cost	Total Cost	Enrollment 08/09	Cost per Student		
Mesa Union Elementary	0	0	5				146,231	22,671											156,208	5	49,105	38,027	201,846	614,088	580	1,059		
Pleasant Valley Elementa	14,000	39,218	5				182,050	23,648	273,600	2			672,913	6	197,862	3	96,094	1	3,061,670	62	877,729	497,762	1,124,302	7,060,848	6,509	1,085		
Somis Union Elementary	0	0	5				31,700												147,285	5	35,935	38,729	195,762	449,411	310	1,450		
Total for all Districts	\$14,000	\$39,218	15	0	0	0	\$359,981	\$46,319	\$273,600	2	0	0	\$672,913	6	\$197,862	3	\$96,094	1	\$3,365,163	72	\$962,769	\$574,518	\$1,521,910	8,124,347	7,399	\$1,098		
Pleasant Valley Unified	14,000	39,218	5				182,050	23,648	273,600	2			672,913	6	197,862	3	96,094	1	3,061,670	62	877,729	497,762	1,124,560	7,061,106	7,399	954		
Potential Savings	0	0	10	0	0	0	177,931	22,671	0	0	0	0	0	0	0	0	0	0	303,493	10	85,040	76,756	397,350	1,063,241	7,399	144		
Scenario 5																												
District	Trustees	Trustees Benefits	# Of	Personnel Comm.	P.C. Benefits	# Of	Superintendent	Sup. Compensation	Asst. Superintendent	# Of	Administrator	#Of	Director's	# Of	Management/Supervisor	# Of	Certificated Emp.	# Of	Classified Emp.	# Of	Compensation	Benefits	Misc. Cost	Total Cost	Enrollment 08/09	Cost per Student		
Conejo Valley Unified	32,160	59,690	5	1,800	35,814	3	175,000	8,400	434,941	3			1,663,901	16	669,211	10	1,040,787	13	6,344,095	123	126,540	1,918,262	1,701,867	14,212,468	22,097	643		
Oak Park Unified	0	0	5				164,877		258,965	2			544,983	6	393,438	5	661,927	18	27,792	5	661,927	419,892	713,663	3,185,537	3,620	880		
Total for all Districts	\$32,160	\$59,690	10	\$1,800	\$35,814	3	\$339,877	\$8,400	693,906	5	0	0	\$2,208,884	22	\$669,211	10	\$1,434,225	18	\$7,006,022	141	\$154,332	\$2,338,154	\$2,415,530	17,398,005	25,717	\$677		
Conejo Valley Unified	32,160	59,690	5	1,800	35,814	3	175,000	8,400	434,941	3			1,663,901	16	669,211	10	1,040,787	13	6,344,095	123	126,540	1,918,262	1,864,186	14,374,787	25,717	559		
Potential Savings	0	0	5	0	0	0	164,877	0	258,965	2	0	0	544,983	6	393,438	5	661,927	18	27,792	5	661,927	419,892	551,344	3,023,218	25,717	118		
Scenario 6																												
District	Trustees	Trustees Benefits	# Of	Personnel Comm.	P.C. Benefits	# Of	Superintendent	Sup. Compensation	Asst. Superintendent	# Of	Administrator	#Of	Director's	# Of	Management/Supervisor	# Of	Certificated Emp.	# Of	Classified Emp.	# Of	Compensation	Benefits	Misc. Cost	Total Cost	Enrollment 08/09	Cost per Student		
Moorpark Unified	14,400	61,150	5				149,018	10,258	365,223	3			772,213	9	312,376	5	169,175	2	1,294,164	30	63,397	635,960	516,127	4,363,461	7,317	596		
Simi Valley Unified	26,																											

*(This page intentionally blank)*



## **Disclaimers**

This report of the "School District Administration: Is the Cost Too High?" is issued by the 2008-2009 Ventura County Grand Jury. A member of this Grand Jury, because of a potential conflict of interest, was excused from participating in the generation of this report. This report is based on information obtained from outside sources with none of the information being obtained from the excused Grand Juror.

*(This page intentionally blank)*