

**Conejo Creek Vegetation Removal Project Upstream of Highway 101**

**REACH #: 46015 – 46016, 46051**

**PROJECT #: P6046015**

**FACILITY TYPE:** Soft bottom earthen channel

**P Codes: 416, 417**

**PT Codes: 43, 44**

**SITE COORDINATES:**

Site	NW Coordinate	NE Coordinate	SW Coordinate	SE Coordinate
Conejo Creek – Highway 101 to Mission Oaks Drain (Reach 46015)	34.221519°, -118.982451°	34.221224°, -118.981756°	34.209349°, -118.994264°	34.209026°, -118.993675°
Conejo Creek –Mission Oaks Drain to Upland Road Drain (Reach 46016)	34.230723°, -118.971674°	34.230864°, -118.971302°	34.221519°, -118.982451°	34.221224°, -118.981756°
Upland Road Drain (Reach 46051)	34.232811°, -118.973165°	34.232876°, -118.973065°	34.230750°, -118.971674°	34.230864°, -118.971302°

**PROJECT DESCRIPTION:** Zone 3 O&M crews conducted vegetation removal activities within the subject reaches from the Highway 101 Bridge upstream to the confluence with Upland Drain, and within Upland Road Drain as well. Removal activities focused on the discing of woody and herbaceous vegetation outside of the low-flow channel wherein approximately 80% of vegetation was tracked and disced by heavy equipment. As discing activities were progressed, BC Tree Services (contractor) crews followed closely behind and used a masticator mower to remove stands of giant reed (*Arundo donax*) and castor bean (*Ricinus communis*) which were unable to be removed by the discing crews. Hand crews were also used to remove vegetation in areas where heavy equipment was unable to access, such as within Upland Road Drain. All vegetation removal activities followed a similar pattern as previous years. Vegetation removal activities occurred outside of all surface waters. Therefore, no impacts to surface waters occurred.

**PROJECT IMPACTS:**

**Temporary Impacts:** Approximately 49 acres of herbaceous riparian vegetation

**Permanent Impacts:** None.

**QUANTITIES:** N/A

**DISPOSAL SITE:** N/A

**EQUIPMENT UTILIZED:** two (2) D6 Cat bulldozers with attached mowing disc attachments, one (1) hydro ax, ¾ ton pickup truck.

**BMPs APPLIED:**

1, 4, 7, 11, 21, 22, 24, 25.

**PROJECT DURATION:**

**START:** 10/15/25 **END:** 11/4/25

**ACTUAL WORK DAY(S):** 16

**SURFACE WATER DIVERSION:** None

**SPECIES IMPACTED:** No species were adversely impacted. See biological monitoring report.

**MITIGATION:** None required.

**MAP:**



**PHOTOGRAPHS:**



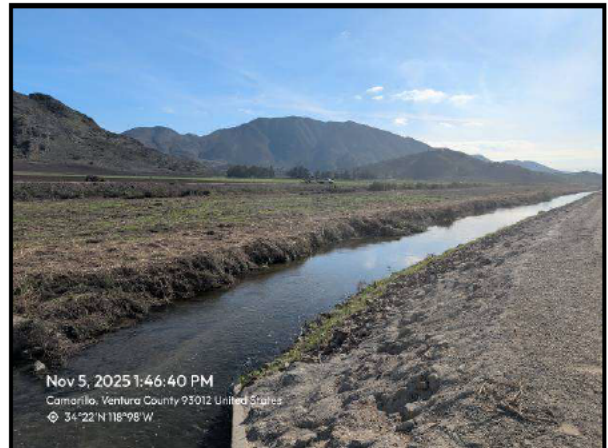
Looking upstream from western levee prior to Project activities, October 8, 2025.



Looking upstream from western levee following Project activities, November 5, 2025.



Looking downstream from Mission Oaks Drain along the western levee prior project activities, October 8, 2025.



Looking downstream from Mission Oaks Drain along the western levee following Project activities November 5, 2025.

Additional photos can be found in Appendix B of the Survey Report.

# **CONEJO CREEK VEGETATION MANAGEMENT PROJECT – UPSTREAM OF HIGHWAY 101 BIOLOGICAL SURVEY AND MONITORING REPORT**

**COUNTY FACILITY No. 46015 & 46016**

Prepared for:  
VENTURA COUNTY PUBLIC WORKS AGENCY - WATERSHED PROTECTION  
800 South Victoria Avenue  
Ventura, California 93009-1610

Prepared by  
PADRE ASSOCIATES  
1861 Knoll Drive  
Ventura, California 93003

November 2025  
Project No. 2402-1631

## TABLE OF CONTENTS

	<b>Page</b>
INTRODUCTION .....	1
PROJECT INFORMATION .....	1
BIOLOGICAL RESOURCE EFFECTS .....	3
PERMIT COMPLIANCE .....	6
CONCLUSION .....	6

## TABLES

1	Site Location Details .....	2
2	Dates of Biological Surveys and Monitoring .....	2
3	Wildlife Observed Within or Adjacent to the Site .....	4

## APPENDICES

APPENDIX A:	SITE MAPS
APPENDIX B:	PHOTOGRAPHIC DOCUMENTATION
APPENDIX C:	DAILY FIELD OBSERVATION FORMS
APPENDIX D:	APPLICABLE BMPS
APPENDIX E:	BIOLOGICAL OPINION DOCUMENTS

## INTRODUCTION

On behalf of the Ventura County Public Works Agency - Watershed Protection (WP), Padre Associates, Inc. (Padre), has prepared this Biological Survey Report (Report) for the Conejo Creek Vegetation Management Project (Project) – Upstream of Highway 101, Ventura County, California. This Report contains detailed accounts of biological monitoring and biological survey results, Project activities, and regulatory permit compliance issues relating to the following permits:

- U.S. Army Corps of Engineers (USACE) Section 404 Nation Wide Permit (NWP) 31 SPL-2018-00040-AJS;
- Los Angeles Regional Water Quality Control Board (RWQCB) Section 401 Water Quality Certification File No. 14-038;
- California Department of Fish and Wildlife (CDFW) Streambed Alteration Agreement (SAA) No. 1600-2004-0512-R5;
- U.S. Fish and Wildlife Service (USFWS) Biological Opinion (BO) No. 08EVEN00-2018-F-0330; and
- USFWS BO No. 08EVEN00-2015-F-0055.

Attached to this Report are appendices containing photographic documentation of the Project, relevant Project documents (e.g., daily field observation forms, WP's environmental documents), a Site Map, and applicable Best Management Practices (BMPs).

## PROJECT INFORMATION

### Project Purpose

The purpose of the Project was to ensure proper flow conveyance during storm events through the completion of regular vegetation trimming and removal activities within Conejo Creek. These activities are performed on a yearly basis and follow a similar pattern between years wherein approximately 80% of the vegetation on the upland benches within the banks of Conejo Creek upstream Highway 101 (Reach 46015 & 46016) is tracked and mowed by heavy equipment with a disc mower attachment. Stands of castor bean (*Ricinus communis*) and giant reed (*Arundo donax*) along the low-flow channel are also removed using a masticator mower operated by WP contractor BC Tree Services.

### Project Location

The Project site (Site) consists of fragmented freshwater marsh, riparian woodland and riparian scrub habitats within the banks of Conejo Creek in the City of Camarillo, Ventura County, California. Site location details can be found below in Table 1.

**Table 1. Site Location Details.**

Site	NW Coordinates	NE Coordinates	SW Coordinates	SE Coordinates
Conejo Creek – Highway 101 to Mission Oaks Drain (Reach 46015)	34.221519°, -118.982451°	34.221224°, -118.981756°	34.209349°, -118.994264°	34.209026°, -118.993675°
Conejo Creek –Mission Oaks Drain to Upland Road Drain (Reach 46016)	34.230723°, -118.971674°	34.230864°, -118.971302°	34.221519°, -118.982451°	34.221224°, -118.981756°
Upland Road Drain (Reach 46051)	34.232811°, -118.973165°	34.232876°, -118.973065°	34.230750°, -118.971674°	34.230864°, -118.971302°

**Project Personnel**

██████████ was the primary Project biologist, responsible for conducting the pre-activity and listed species surveys for the Project. Mr. ██████████ has earned a B.S. in Environmental Science from California State University Channel Islands and has over 14 years of experience as a professional biologist.

**Survey Information**

Prior to the initial start of Project activities, during the morning hours of October 8, 2025, Mr. ██████████ conducted a pre-activity biological survey throughout the Site. Following the completion of the survey, a summary email was provided to WP personnel. The survey was conducted by walking transects of opportunity and surveying the surrounding vegetation. Species were recorded based on visual observation using 10x50 binoculars, auditory cues (calls, scolds, and songs), and indirect signs (tracks, scat, skeletal remains, nests, burrows, etc.). Following the completion of each of the biological surveys an e-mail summary including any potential sensitive issues, and recommended protection strategies were provided to WP. Dates of biological surveys can be found below in Table 2.

**Table 2. Biological Survey Dates.**

Month	Date(s)
October	8

**Project Details**

Project activities began on October 15, 2025, and concluded November 4, 2025. As mentioned above, vegetation maintenance activities followed a similar pattern of work as in previous years. Additionally, herbaceous vegetation, and non-native woody vegetation within Upland Road Drain was also removed. Work within Upland Road Drain was completed by hand crews using both powered and non-powered hand tools. All Project activities were completed by WP Operations and Maintenance personnel, and their subcontractor, B.C. Tree Services. Heavy equipment was used to mow herbaceous vegetation on the upland benches adjacent to the low flow channel. All vegetation was mulched on site such that offsite disposal was not required. It is our understanding that, except for brief stream crossings by heavy equipment at designated crossing locations, all Project activities occurred outside of all surface waters. Prior to the start of

Project activities, crews placed straw wattle BMP's downstream of the designated stream crossing locations to minimize turbidity impacts to downstream sections of Conejo Creek. Given the infrequency of crossings, the short time required for heavy equipment to cross the surface water and coupled with the placement of straw wattles downstream of the crossing locations, turbidity related impacts to downstream aquatic resources were kept to a minimum.

## BIOLOGICAL RESOURCE EFFECTS

### Site Characteristics

The Site encompasses approximately 49.2 acres of riparian woodland, riparian scrubland, and freshwater marsh habitats within the banks of Conejo Creek. Surface water was present within the low flow portion of the Site during all Project activities.

### Vegetation

Native vegetation observed within the Site consisted of arroyo willow (*Salix lasiolepis*), narrowleaf willow (*Salix exigua*), yellow willow (*Salix lutea*), red willow (*Salix laevigata*), watercress (*Nasturtium officinale*), arroyo lupine (*Lupinus succulentus*), narrow leaf cattail (*Typha domingensis*), stinging nettle (*Urtica dioica*), mugwort (*Artemisia douglasiana*), western ragweed (*Ambrosia psilostachya*), annual sunflower (*Helianthus annuus*), island morning glory (*Calystegia macrostegia*), knotweed (*Persicaria lapathifolia*), bitter root (*Lewisia sp.*), California bulrush (*Schoenoplectus californicus*), seep monkey flower (*Erythranthe guttata*), telegraph weed (*Heterotheca grandiflora*), California poppy (*Eschscholzia californica*), bur marigold (*Bidens laevis*), seaside heliotrope (*Heliotropium curassivicum*), Douglas's nightshade (*Solanum douglasii*), tall flat sedge (*Cyperus eragrostis*), western goldenrod (*Euthamia occidentalis*), horseweed (*Erigeron canadensis*), California sage brush (*Artemisia californica*), rough cocklebur (*Xanthium strumarium*), branching phacelia (*Phacelia ramosissima*), salt bush (*Atriplex lentiformis*), and jimsonweed (*Datura wrightii*).

Non-native vegetation within the Site consisted of tree tobacco (*Nicotiana glauca*), goldentop (*Lamarckia aurea*), Italian rye grass (*Festuca perennis*), castor bean, Italian thistle (*Carduus pycnocephalus*), summer mustard (*Hirschfeldia incana*), Mexican fan palm (*Washingtonia robusta*), plume acacia (*Paraserianthes lophantha*), curly dock (*Rumex crispus*), goosefoot (*Chenopodium sp.*), sweet fennel (*Foeniculum vulgare*), white sweetclover (*Melilotus albus*), sow thistle (*Sonchus oleraceus*), cheeseweed (*Malva parviflora*), giant reed, smilo grass (*Stipa miliacea*), Russian thistle (*Salsola tragus*), poison hemlock (*Conium maculatum*), bristly ox-tongue (*Helminthotheca echioides*), and wild radish (*Raphanus sativus*). Please refer to Appendix B for Site photographs.

### Wildlife

According to WP's Routine Operations and Maintenance (O&M) Environmental Impact Report (EIR) Table 3-2, special-status wildlife potentially present throughout the reaches of Conejo Creek includes arroyo chub (*Gila orcuttii*), and two-striped garter snake (*Thamnophis hammondi*). Based on the suitable habitat within the Site, these species may occur at this location, despite not being observed during the pre-activity survey. Additionally, during past years, southwestern pond turtle (*Actinmeys pallida*) individuals have been documented within the

Site. Accordingly, prior to the start of Project activities, Mr. [REDACTED] reiterated to all Project personnel of the potential presence of southwestern pond turtle, arroyo chub, and two-striped garter snake within the Site, and recommended that all Project activities be conducted outside of the surface water within the Site to minimize potential impacts to southwestern pond turtle and the other primarily aquatic species which had a reasonable potential to occur within the Site. Impacts to nesting birds were prevented by conducting the work after the end of the typical avian nesting season.

WP’s BO (Table 3, Page A7 included here in Appendix E), issued by the USFWS (December 12, 2012 *Final Programmatic Biological and Conference Opinion for Ventura County Watershed Protection District’s Routine Operation and Maintenance Program, Ventura County, California (8-8-11-F/C-12)*), lists the reaches of Conejo Creek upstream of Highway 101 (reach 46105 and 46016) as potential habitat for the federally endangered LBVI. Minimization Measure LBV – 1 and LBV – 2 state that in areas where suitable habitat is present, Project activities should be conducted between September 15<sup>th</sup> and March 1<sup>st</sup>, unless a suite of modified protocol surveys are conducted by a USFWS approved biologist and said modified protocol surveys confirm absence of the species within and/or adjacent to the Site. The postponement of Project activities until after September 15<sup>th</sup> meant that LBVI surveys were not required.

No breeding bird activity was observed during the pre-activity survey. A detailed list of species observed during the Project can be found below in Table 3. A total of three (3) sensitive species were observed during the pre-activity survey and are as follows:

- One (1) CDFW Fully Protected (when nesting) Species: White-tailed kite (*Elanus leucurus*). No nesting behavior was documented by this species within or immediately adjacent to the Site.
- Two (2) USFWS Birds of Conservation Concern (BCC): Allen’s hummingbird (*Selasphorus sasin*), and wrenit (*Chamaea fasciata*). No nesting behavior was documented by either of these species within or immediately adjacent to the Site.

**Table 3. Wildlife Observed Within or Adjacent to the Site.**

Common Name	Scientific Name	Status
<b>Birds</b>		
Allen’s hummingbird	<i>Selasphorus sasin</i>	MBTA, BCC
American barn owl	<i>Tyto alba</i>	MBTA
American crow	<i>Corvus brachyrhynchos</i>	MBTA
American coot	<i>Fulica americana</i>	MBTA
American goldfinch	<i>Spinus tristis</i>	MBTA
American kestrel	<i>Falco sparverius</i>	MBTA
Anna’s hummingbird	<i>Calypte anna</i>	MBTA
belted kingfisher	<i>Megaceryle alcyon</i>	MBTA
Bewick’s wren	<i>Thryomanes bewickii</i>	MBTA
black phoebe	<i>Sayornis nigricans</i>	MBTA
blue-gray gnatcatcher	<i>Poliophtila caerulea</i>	MBTA

**Table 3. Wildlife Observed Within or Adjacent to the Site, continued.**

Common Name	Scientific Name	Status
bushtit	<i>Psaltriparus minimus</i>	MBTA
California towhee	<i>Melospiza crissalis</i>	MBTA
canyon wren	<i>Catherpes mexicanus</i>	MBTA
Cassin's kingbird	<i>Tyrannus vociferans</i>	MBTA
common yellowthroat	<i>Geothlypis trichas</i>	MBTA
European starling*	<i>Sterna vulgaris</i>	MBTA
house finch	<i>Carpodacus mexicanus</i>	MBTA
great blue heron	<i>Ardea herodias</i>	MBTA
lesser goldfinch	<i>Spinus psaltria</i>	MBTA
Lincoln's sparrow	<i>Melospiza lincolni</i>	MBTA
mallard	<i>Anas platyrhynchos</i>	MBTA
mourning dove	<i>Zenaida macroura</i>	MBTA
northern house wren	<i>Troglodytes aedon</i>	MBTA
northern mockingbird	<i>Mimus polyglottos</i>	MBTA
red-shouldered hawk	<i>Buteo lineatus</i>	MBTA
red-tailed hawk	<i>Buteo jamaicensis</i>	MBTA
red-winged blackbird	<i>Agelaius phoeniceus</i>	MBTA
rock wren	<i>Salpinctes obsoletus</i>	MBTA
Say's phoebe	<i>Sayornis saya</i>	MBTA
scaly breasted munia*	<i>Lonchura punctulata</i>	NA
song sparrow	<i>Melospiza melodia</i>	MBTA
spotted towhee	<i>Pipilo maculatus</i>	MBTA
warbling vireo	<i>Vireo gilvus</i>	MBTA
white-crowned sparrow	<i>Zonotrichia leucophrys</i>	MBTA
white-tailed kite	<i>Elanus leucurus</i>	MBTA, FP-N
wrentit	<i>Chamaea fasciata</i>	MBTA, BCC
yellow-rumped warbler	<i>Setophaga coronata</i>	MBTA
<b>Fish</b>		
common carp*	<i>Cyprinus carpio</i>	NA
largemouth bass*	<i>Micropterus salmoides</i>	NA
western mosquito fish*	<i>Gambusia affinis</i>	NA
<b>Mammals</b>		
Botta's pocket gopher	<i>Thomomys bottae</i>	NA
California ground squirrel	<i>Otospermophilus beecheyi</i>	NA
coyote	<i>Canis latrans</i>	NA
mule deer	<i>Odocoileus hemionus</i>	NA
raccoon	<i>Procyon lotor</i>	NA
<b>Reptiles</b>		
common side blotched lizard	<i>Uta stansburiana</i>	NA
western fence lizard	<i>Sceloporus occidentalis</i>	NA

**Table 3. Wildlife Observed Within or Adjacent to the Site, continued.**

Common Name	Scientific Name	Status
<b>Amphibians</b>		
American bullfrog*	<i>Lithobates catesbeianus</i>	NA
pacific treefrog	<i>Pseudacris regilla</i>	NA
<b>Crustaceans</b>		
Louisiana swamp crayfish*	<i>Procambarus clarkii</i>	NA

MBTA Federal Migratory Bird Treaty Act of 1918  
 BCC USFWS Bird Species of Conservation Concern – Region 32  
 FP-N CDFW Fully Protected Species – When Nesting  
 NA Not Applicable  
 \* Non-native/Introduced Species

**PERMIT COMPLIANCE**

In accordance with BMP 4, Mr. [REDACTED] conducted the required pre-activity surveys prior to the start of Project activities. When Project activities began, work crews were made aware of the potential presence of special status species such as southwestern pond turtle, arroyo chub, and two-striped garter snake while working within Conejo Creek. All additional proposed applicable BMPs from WP’s Routine O&M permits and documents were followed to the extent feasible. Throughout the duration of the Project, no wildlife issues (e.g., native wildlife requiring relocation to a suitable offsite location) were encountered which required the attention of a qualified biologist. A detailed list of the applicable BMPs for this Project can be found in Appendix D of this Report.

**CONCLUSION**

Due to the nature of the activity and the implemented species protection measures, it is our determination that impacts to nesting birds or special-status species did not occur as a result of Project activities. As mentioned above, all applicable BMPs (Appendix D) from WP’s environmental permits and documents were implemented and adhered to while conducting Project activities.

Should you have any questions regarding our survey results please contact me at your earliest convenience at [REDACTED].

Sincerely,  
 PADRE ASSOCIATES, INC.

[REDACTED]

[REDACTED]  
 Wildlife Biologist / Project Manager

**APPENDIX A  
SITE MAPS**



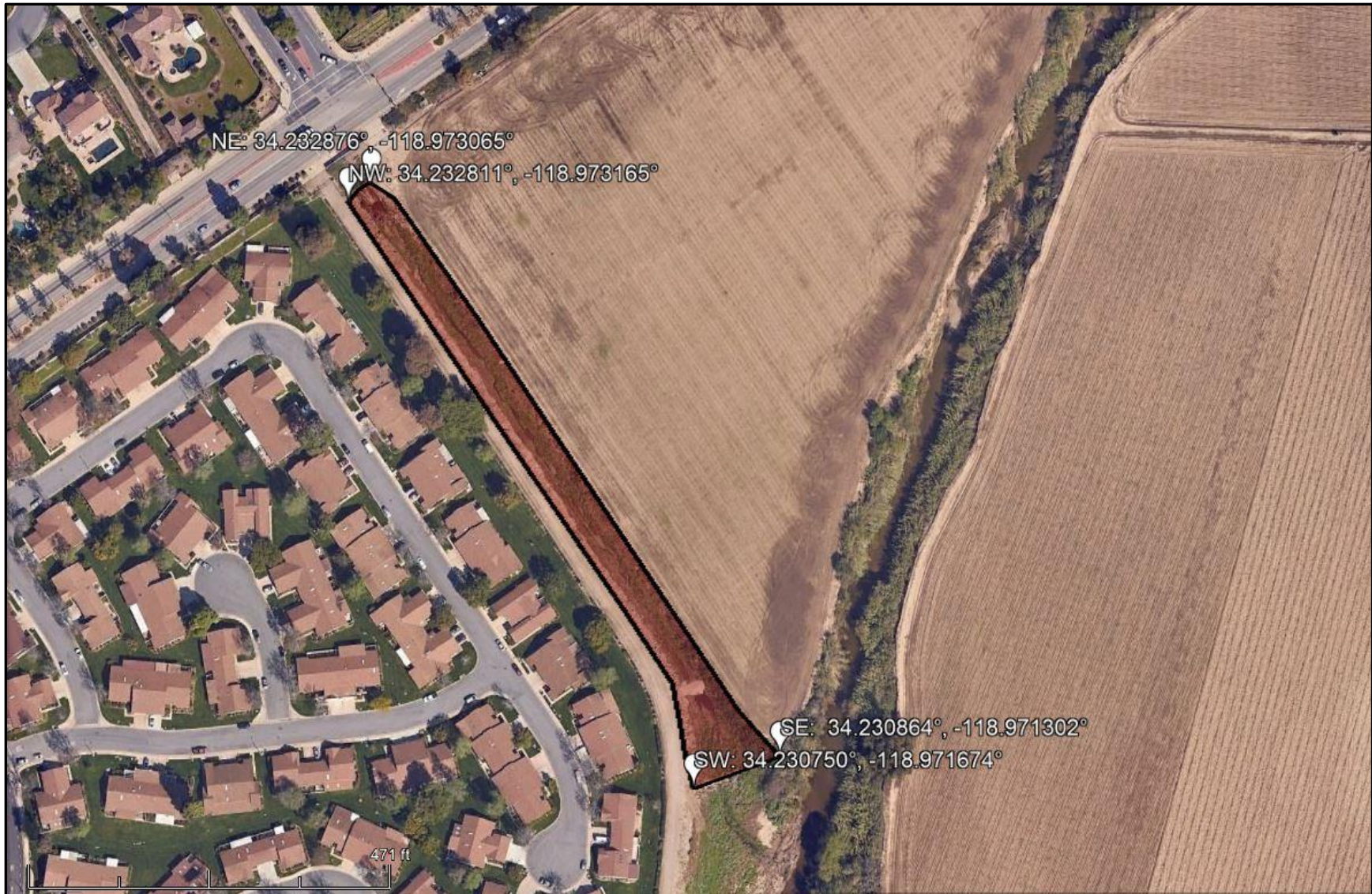
**Figure 1.** Site Map showing the entirety of the Site (red polygon) and the Site coordinates.



**Figure 2.** Site Map showing the lower portion of Conejo Creek (Reach 46015) (red polygon) and the Site coordinates.



**Figure 3.** Site Map showing the upper portion of Conejo Creek (Reach 46016) (red polygon) and the Site coordinates.



**Figure 3.** Site Map showing Upland Road Drain (Reach 46051) (red polygon) and the Site coordinates.

**APPENDIX B**  
**PHOTOGRAPHIC DOCUMENTATION**



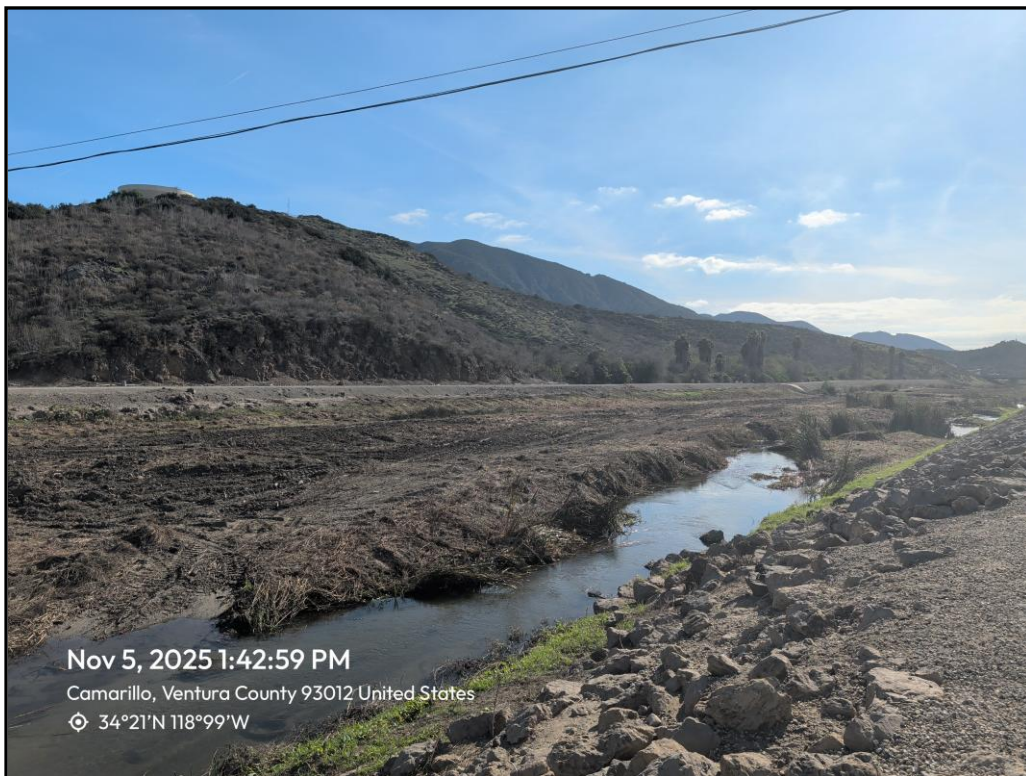
**Photo 1.** Looking upstream (northeast) from the west levee access road near Highway 101 prior to project activities, October 8, 2025.



**Photo 2.** Looking upstream (northeast) from the west levee access road near Highway 101 following project activities, November 5, 2025.



**Photo 3.** Looking downstream (southwest) from the west levee access road towards Highway 101 prior to project activities, October 8, 2025.



**Photo 4.** Looking downstream (southwest) from the west levee access road towards Highway 101 following project activities, November 5, 2025.



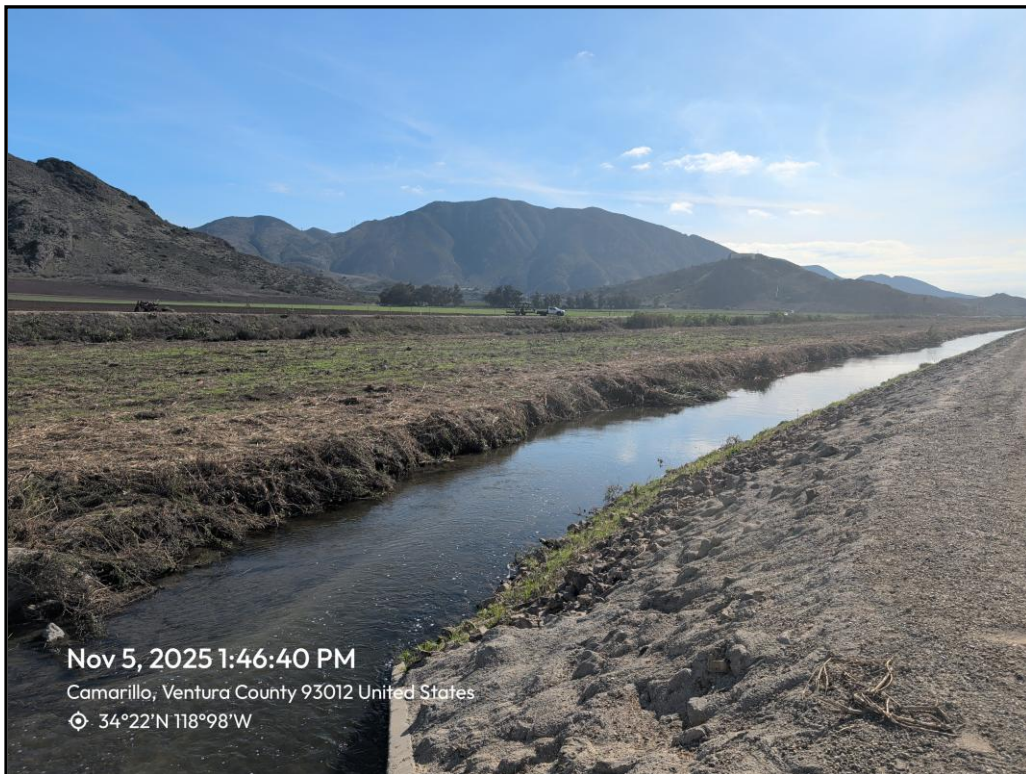
**Photo 5.** Looking upstream (northeast) from the west levee access road prior to project activities, October 8, 2025.



**Photo 6.** Looking upstream (northeast) from the west levee access road following project activities, November 5, 2025.



**Photo 7.** Looking downstream (southeast) from the west levee access road near Mission Oaks Drain prior to project activities, October 8, 2025.



**Photo 8.** Looking downstream (southeast) from the west levee access road near Mission Oaks Drain following project activities, November 5, 2025.



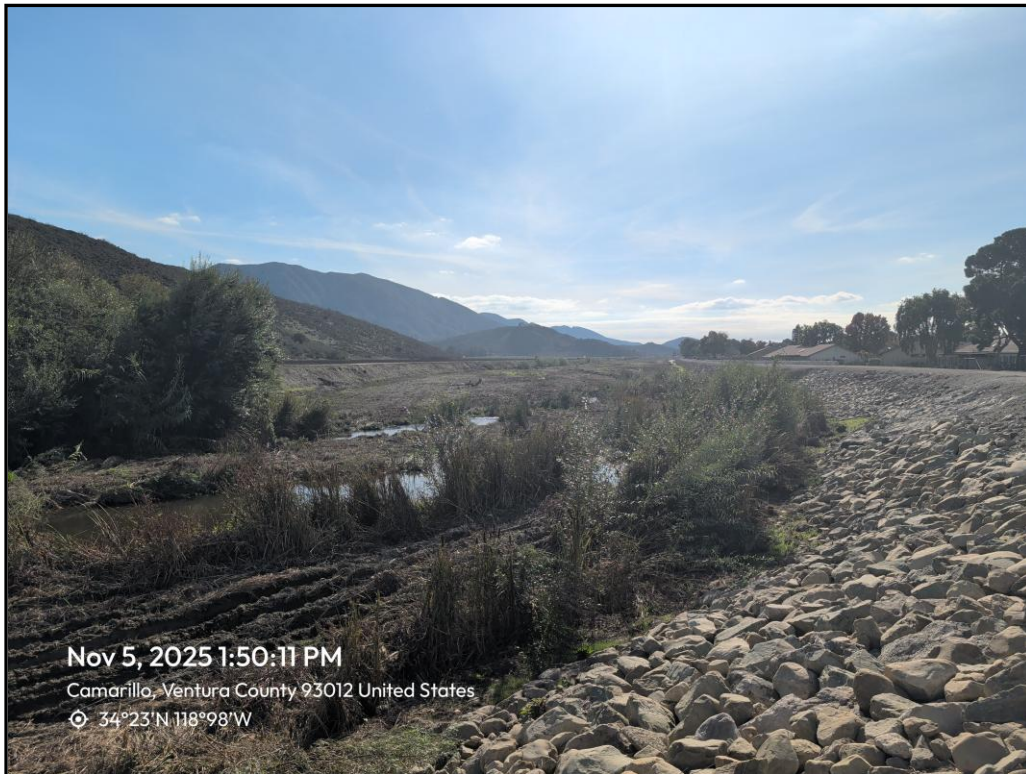
**Photo 9.** Looking upstream (northeast) from the west levee access road near Mission Oaks Drain prior to project activities, October 8, 2025.



**Photo 10.** Looking upstream (northeast) from the west levee access road near Mission Oaks Drain following project activities, November 5, 2025.



**Photo 11.** Looking downstream (southeast) from the west levee access road prior to project activities, October 8, 2025.



**Photo 12.** Looking downstream (southeast) from the west levee access road following project activities, November 5, 2025.



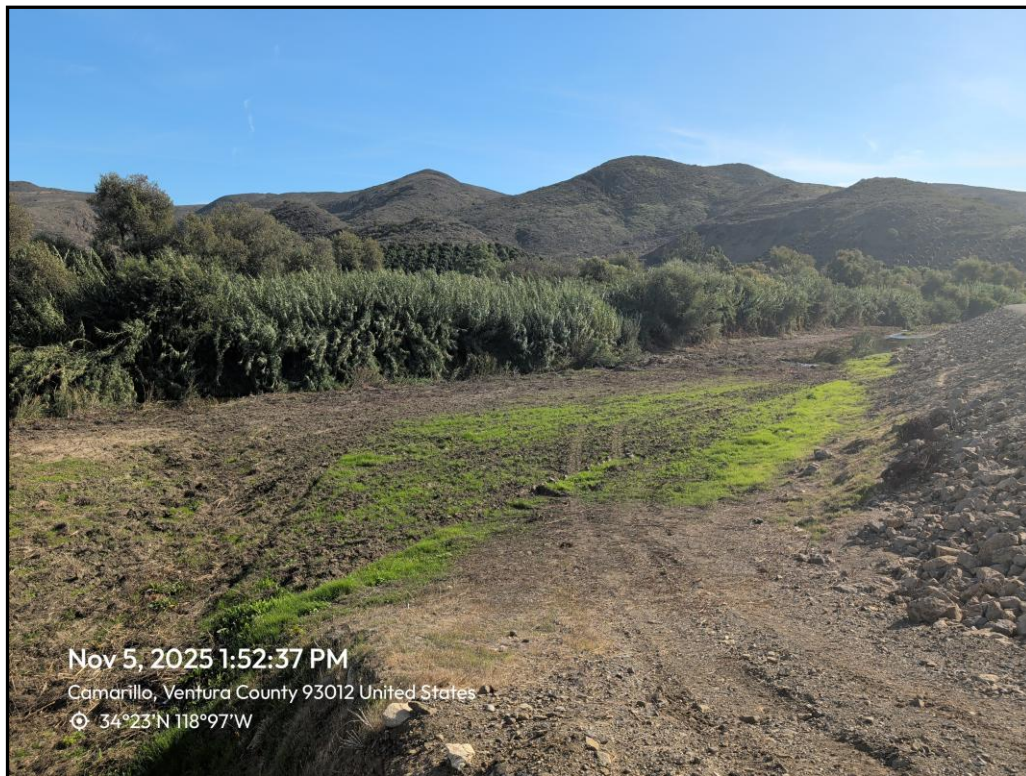
**Photo 13.** Looking upstream (east) from the west levee access road prior to project activities, October 8, 2025.



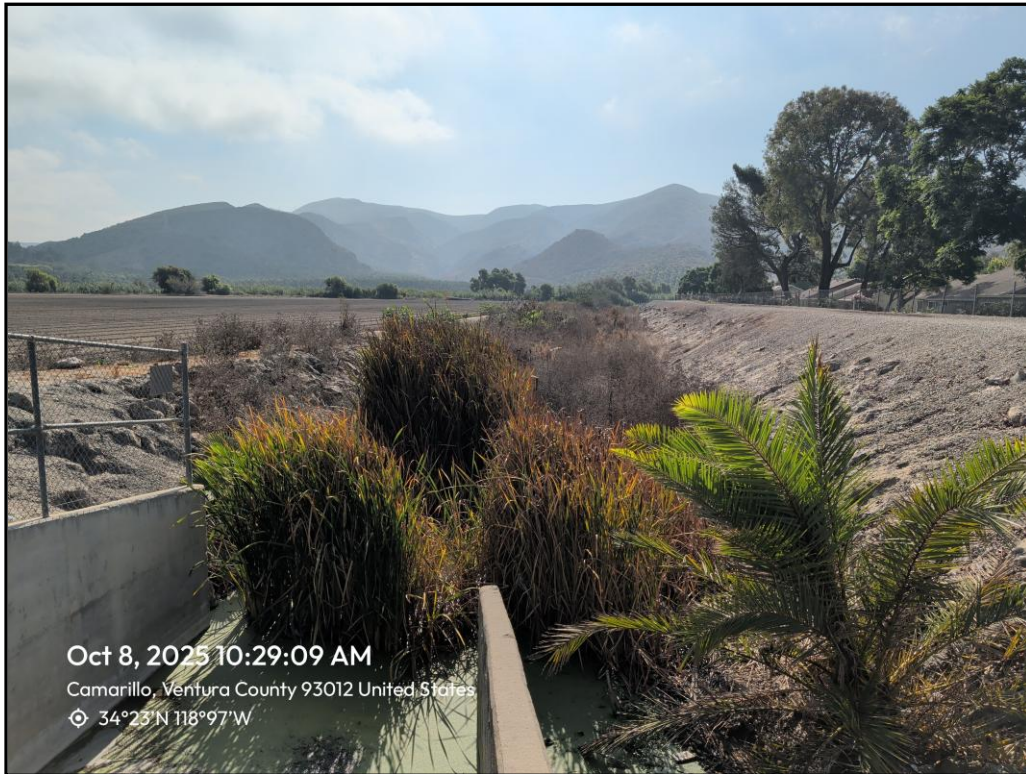
**Photo 14.** Looking upstream (east) from the west levee access road following project activities, November 5, 2025.



**Photo 15.** Looking downstream (southeast) from the west levee access Road near the confluence with Upland Road Drain prior to project activities, October 8, 2025.



**Photo 16.** Looking downstream (southeast) from the west levee access Road near the confluence with Upland Road Drain following project activities, November 5, 2025.



**Photo 17.** Looking downstream (southeast) from outlet of Upland Road Drain, near Santa Rosa Rd. prior to project activities, October 8, 2025.



**Photo 17.** Looking downstream (southeast) from outlet of Upland Road Drain, near Santa Rosa Rd. following the completion of project activities, November 5, 2025.

**APPENDIX C**  
**DAILY FIELD OBSERVATION FORMS**

# REPORT OF FIELD OBSERVATIONS

Job No.: 2402-1631	Date: 10/8/25	M	T	W	T	F	S	S
Client: VCPWA-WP	Project: Conejo Vegetation Removal							
Location: Conejo Creek, Camarillo, CA	Weather: Overcast, 60° F rising							
Observer: [REDACTED]	Observation Period	Start: 0700	Stop: 1200					

**Project Activities:**

- None; project activities scheduled to start following the completion of biological surveys. Planned work will consist of mowing/discing herbaceous vegetation (80% removal throughout reach) and removal of woody invasive species (e.g., giant reed [*A. donax*])

**Biological Activities:**

- General wildlife survey prior to the start of annual vegetation management activities.
- Species observed: MALL, MODO, ANHU, ALHU, AMCO, GBHE, WTKI, RSHA, RTHA, BAOW, BEKI, MAKE, BLPH, SAPH, CAKI, WAVI, AMCR, BUSH, WREN, BGGN, ROWR, CANW, HOWR, BEWR, EUST (non-native), NOMO, SBMU (non-native), HOFI, LEGO, AMGO, WCSP, SOSP, LISP, CATO, SPTO, RWBL, COYE, YRWA, coyote (t & s), raccoon (t & s), CA ground squirrel, mule deer (t), Botta's pocket gopher (burrow), western fence lizard, common side blotched lizard, American bullfrog, pacific treefrog, bass sp., common carp, western mosquito fish

**Environmental Concerns:**

- None

	End	Page <u>1</u> of <u>1</u>
--	-----	---------------------------

**APPENDIX D**  
**APPLICABLE BMPS**

**Summary of Applicable BMPs for Project Activities as Taken From the VCPWA - WP Routine Operations And Maintenance EIR, BO and Environmental Permits**

BMP	Description
1	<p><b>Avoid Channel Work During the Rainy Season.</b></p> <ul style="list-style-type: none"> <li>▪ Avoid earthwork in earthen and soft bottom channels from December 1 to April 1 unless water is absent.</li> <li>▪ If work is considered critical, work in flowing water is acceptable, provided flow is diverted according to the Water Diversion Guide and sensitive aquatic species not present.</li> <li>▪ No earthwork shall be conducted during rain events, or if 0.25 inches or more of rain is forecast within 12 hours of scheduled work</li> </ul>
4	<p><b>Survey for Habitat Prior to Routine Maintenance Work.</b></p> <ul style="list-style-type: none"> <li>▪ A biological survey for nesting birds required prior to work from February 1 to September 15 if in or adjacent to suitable habitat.</li> <li>▪ Nesting habitat defined as cattail patches, short and tall trees, and shrubby areas. Open gravel, bridges, culverts, and fence posts may also support nests.</li> <li>▪ Work= mowing/disking, earth work, clean outs, access road work lasting more than one day, and repairs where nesting bird habitat is in work area or within 300 feet.</li> <li>▪ If active bird nests are identified, work within 300 feet (500 feet for raptors) must be postponed until after September 15, unless the biologist determines the nest becomes inactive or a reduced buffer is approved by regulatory agencies.</li> <li>▪ No bio survey needed for routine herbicide application in/on facilities to sparse, short (&lt;3 foot) weedy vegetation (includes young (&lt;1year old mule fat, willows or cattails).</li> </ul>
7	<p><b>Continue Existing Procedures for Sediment Removal and Vegetation Control for Calleguas Creek, Conejo Creek, and Revolon Slough.</b></p> <ul style="list-style-type: none"> <li>▪ Conduct sediment removal and in-stream vegetation control along unimproved channels along Calleguas Creek, Conejo Creek, Revolon Slough, Arroyo Las Posas and generally throughout Zone 3 in accordance with previous Streambed Alteration Agreements.</li> <li>▪ See Attached "Grandfathered Streambed Alteration Agreement Conditions."</li> </ul>
11	<p><b>Leave Patches of Vegetation in Channel Bottom.</b></p> <ul style="list-style-type: none"> <li>▪ Minimize vegetation removal or thinning in earthen or earthen bottom channels; remove the least amount necessary to achieve the specific maintenance objectives for the reach.</li> <li>▪ Remove native vegetation in a non-continuous manner, leaving small patches intact, provided they will not adversely affect conveyance capacity.</li> </ul>
12	<p><b>Leave Herbaceous Wetland Vegetation in Channel Bottom.</b></p> <ul style="list-style-type: none"> <li>▪ Minimize removal or thinning of emergent native vegetation rooted in or adjacent to the low flow channel or aquatic habitats, unless inconsistent with maintenance objectives or capacity requirements.</li> </ul>
21	<p><b>Avoid Spills and Leaks.</b></p> <ul style="list-style-type: none"> <li>▪ Keep all equipment in good working condition and free of leaks.</li> <li>▪ No equipment maintenance or refueling in a channel or basin bottom.</li> <li>▪ Place drip pans under all stationary equipment such as motors, pumps, generators, compressors, and welders.</li> <li>▪ Spill containment materials must be on site or readily available for any equipment maintenance or refueling that occurs adjacent to a watercourse.</li> <li>▪ Train all maintenance crews in spill containment and response.</li> <li>▪ Immediately clean up all spills. Submit report to the Office of Spill Prevention and Response.</li> </ul>

**Summary of Applicable BMPs for Project Activities as Taken From the VCPWA - WP Routine  
Operations And Maintenance EIR, BO and Environmental Permits**

BMP	Description
22	<p><b>Biological Surveys in Appropriate Habitat Prior to Vegetation Maintenance.</b></p> <ul style="list-style-type: none"> <li>▪ Biologists conducting surveys for tidewater goby, California red-legged frog, least Bell's vireo and southwestern willow flycatcher shall be approved by the U.S. Fish &amp; Wildlife Service in writing.</li> <li>▪ Prior to sediment removal, vegetation control, or repair work in earthen or earthen bottom facilities, an approved biologist shall survey for threatened, endangered, or sensitive species if suitable habitat occurs in or near work area. If such species are within or in close proximity to the work areas, the District shall reschedule the work when the species are not present.</li> <li>▪ If it is necessary to conduct the work while sensitive species are present or in proximity to the work areas, a species protection plan shall be developed, approved by USFWS/NMFS/CDFW, then implemented.</li> <li>▪ An approved biologist shall periodically monitor the work area during maintenance activities for wildlife and relocate species as needed to minimize mortality.</li> <li>▪ Exotic fish, invertebrate, amphibian and reptile species shall be captured when feasible, dispatched and properly disposed by a qualified biologist.</li> </ul>
23	<p><b>Invasive Plant Removal Protocols.</b></p> <ul style="list-style-type: none"> <li>▪ Remove invasive plant species in a manner that prevents propagation.</li> <li>▪ Spray or mow plants before seeds ripen, when feasible.</li> <li>▪ All cut/removed invasive vegetation shall be taken to a dump as a destruction load.</li> <li>▪ Do not stockpile invasive vegetation (including mulch) where materials would wash downstream or allowed to propagate.</li> <li>▪ For giant reed (Arundo donax), minimize ground disturbance and use foliar glyphosate treatment on smaller infestations, as feasible. Best to apply herbicide May 1 to October 1, if breeding birds absent. No grading to remove root masses unless earthwork is part of routine maintenance work.</li> </ul>
24	<p><b>Air Quality BMPs.</b> The following measures shall be incorporated into maintenance activities to minimize fugitive dust emissions during grading, excavation, and construction activities.</p> <ul style="list-style-type: none"> <li>▪ Minimize the areas disturbed at any one time by clearing, grading, earth moving, or excavation operations to prevent excessive dust.</li> <li>▪ Water grading/excavation areas prior to and during work.</li> <li>▪ Cover all truck loads; required by California Vehicle Code §23114.</li> <li>▪ Prevent fugitive dust (via treatment) on all graded and excavated material, exposed soil areas, stockpiles, including unpaved parking and staging areas, and other active portions of the construction site.</li> <li>▪ District staff shall weekly monitor contractor graded and/or excavated inactive areas of the construction site for dust stabilization.</li> <li>▪ No grading/earth work during periods of high winds (i.e., wind speed sufficient to cause fugitive dust to impact adjacent properties) to prevent excessive fugitive dust.</li> <li>▪ Use rumble strips or track out devices where vehicles enter and exit unpaved roads onto paved road.</li> <li>▪ All on site construction roads that have a daily traffic volume of more than 50 daily trips shall be stabilized as to minimize transport of earthen material from the site.</li> <li>▪ There shall be at least one qualified District staff on site each work day to monitor the provisions of the Fugitive Dust Mitigation Plan and any other applicable fugitive dust rules, ordinances, or conditions.</li> <li>▪ Personnel involved in grading operations shall be advised to wear respiratory protection in accordance with California Division of Occupational Safety and</li> </ul>

**Summary of Applicable BMPs for Project Activities as Taken From the VCPWA - WP Routine  
Operations And Maintenance EIR, BO and Environmental Permits**

BMP	Description
	<p>Health Regulations.</p> <ul style="list-style-type: none"> <li>▪ All project construction operations shall be conducted in compliance with all applicable APCD Rules and Regulations with emphasis on Rule 50 (Opacity) and Rule 51 (Nuisance).</li> </ul>
25	<p><b>Construction Noise BMPs.</b></p> <ul style="list-style-type: none"> <li>▪ Noise-generating construction activities shall be restricted to the daytime (i.e., 7:00 AM to 7:00 PM, Monday through Friday).</li> <li>▪ Minimize sustained construction noise adjacent to sensitive wildlife during the nesting season, as directed by the biological monitor.</li> <li>▪ When construction noise is anticipated to affect sensitive wildlife, environmental staff shall consult with regulatory agencies regarding additional mitigation measures.</li> </ul>
28	<p><b>Environmental Training.</b></p> <ul style="list-style-type: none"> <li>▪ Prior to any sediment removal, vegetation control, or repair work in earthen or earthen-bottomed channels and basins that contain surface water or native vegetation, a qualified biologist familiar with the work site shall provide training to the work crew regarding potential species present, habitats to avoid, measures to implement to minimize impacts, and events/situations that require work to be stopped and the biologist to be contacted.</li> </ul>
NA	<p><b>GRANDFATHERED STREAMBED ALTERATION AGREEMENT CONDITIONS</b></p> <p><b>SAA 5-270-92: REVOLON SLOUGH</b></p> <ul style="list-style-type: none"> <li>▪ Control vegetation (banks and bottom) annually after July 1 for 100 feet upstream, under, and 100 feet downstream of all bridges.</li> <li>▪ Control vegetation (banks and bottom) annually after July 1 for 50 feet upstream and 50 feet downstream of all grade control structures.</li> <li>▪ Sediment may be removed when deposition exceeds two feet above design grade.</li> <li>▪ Vegetation control may be by hand, herbicide, or mechanical methods.</li> </ul> <p><b>Hwy 1 to Las Posas Road Bridge 45101:</b></p> <ul style="list-style-type: none"> <li>▪ Herbicide inside banks, maintain access road as needed during year.</li> <li>▪ No bottom vegetation maintenance.</li> </ul> <p><b>Las Posas Road Bridge to Hueneme Road Bridge 45103:</b></p> <ul style="list-style-type: none"> <li>▪ Herbicide inside banks, maintain access road as needed during year.</li> <li>▪ July 1 to February 1: on west side bottom allow 50 foot long by 15 foot wide pockets of riparian vegetation separated by 100 foot long vegetation management (non-native species removal) zones. Remove willows greater than 3 inches dbh in pockets.</li> <li>▪ July 1 to February 1: Outside riparian pockets, allow 20 percent of bottom with vegetation for two out of three years.</li> <li>▪ July 1 to February 1: Outside riparian pockets, all vegetation may be removed every third year.</li> </ul> <p><b>Hueneme Road Bridge to Wood Road Bridge 45105:</b></p> <ul style="list-style-type: none"> <li>▪ Herbicide inside banks, maintain access road as needed during year.</li> <li>▪ July 1 to February 1: one west side bottom allow solid strip of riparian vegetation 15 feet wide. Remove willows greater than 3 inches dbh annually.</li> <li>▪ July 1 to February 1: Outside riparian pockets, allow 20 percent of bottom to retain vegetation. Remove willows greater than 3 inches dbh annually.</li> <li>▪ July 1 to February 1: Outside riparian pockets, all vegetation may be removed every other year from Hueneme Road to Etting Road. Remove willows greater than 3 inches dbh annually.</li> </ul> <p><b>SAA 5-388-90: PORTIONS OF CALLEGUAS CREEK WATERSHED</b></p> <ul style="list-style-type: none"> <li>▪ Control vegetation (banks and bottom) annually July 1 to February 1 for 100 feet upstream, under, and 100 feet downstream of all bridges/culverts (except</li> </ul>

**Summary of Applicable BMPs for Project Activities as Taken From the VCPWA - WP Routine Operations And Maintenance EIR, BO and Environmental Permits**

BMP	Description
	<p>as noted below).</p> <ul style="list-style-type: none"> <li>▪ Control vegetation (banks and bottom) annually July 1 to February 1 for 25 feet upstream and 25 feet downstream of all grade control structures (except as noted below).</li> <li>▪ Vegetation control may be by hand, mechanical, or herbicide methods.</li> </ul> <p><b>Arroyo Simi from Beltramo Road to No. 2 Canyon 47013:</b></p> <ul style="list-style-type: none"> <li>▪ Herbicide inside banks, maintain access road as needed during year.</li> <li>▪ July 1 to February 1: allow 10 foot wide strip of riparian vegetation at toe of each bank. Alternate removal of strips each year.</li> <li>▪ July 1 to February 1: maintain up to 16 foot wide vegetation free pilot channel in center of creek bottom.</li> </ul> <p><b>Arroyo Simi Sycamore Canyon to Erringer Road 47021:</b></p> <ul style="list-style-type: none"> <li>▪ Herbicide inside banks, maintain access road as needed during year.</li> <li>▪ Control vegetation (banks and bottom) as needed 100 feet upstream and 50 feet downstream of all bridges and grade control structures.</li> <li>▪ Minimize maintenance activities March 1 to July 1.</li> <li>▪ All willow and woody plant species may be controlled.</li> <li>▪ Allow up to 25 percent cover of cattails/tules in channel bottom.</li> </ul> <p><b>Arroyo Simi Erringer Road to Royal Avenue 47021:</b></p> <ul style="list-style-type: none"> <li>▪ Herbicide inside banks, maintain access road as needed during year.</li> <li>▪ July 1 to February 1: control all vegetation (banks and bottom) as needed.</li> <li>▪ Vegetation control may be by hand, mechanical, or herbicide methods.</li> </ul> <p><b>SAA 5-540-91: CALLEGUAS CREEK</b></p> <ul style="list-style-type: none"> <li>▪ Control vegetation (banks and bottom) annually after July 1 for 100 feet upstream, under, and 100 feet downstream of all bridges/culverts.</li> <li>▪ Vegetation control may be by hand, mechanical, or herbicide methods, unless specifically noted below.</li> </ul> <p><b>Calleguas Creek Highway 1 to Hueneme Road 45021/45023:</b></p> <ul style="list-style-type: none"> <li>▪ Herbicide inside banks and 25 feet from toe in bottom, maintain access road as needed during year. No other herbicide use in bottom.</li> <li>▪ July 1 to February 1: each year allow a 10 foot wide (minimum) strip of riparian vegetation along one side of low flow channel. Alternate mechanical removal of strips each year.</li> </ul> <p><b>Calleguas Creek Hueneme Road to 850 ft Upstream of University Road 45025/45027:</b></p> <ul style="list-style-type: none"> <li>▪ Herbicide inside banks and 25 feet from toe in bottom, maintain access road as needed during year. No other herbicide use in bottom.</li> <li>▪ July 1 to February 1: each year allow a 10 foot wide (minimum) strip of riparian vegetation along one side of low flow channel. Alternate mechanical removal of strips each year.</li> </ul> <p><b>Calleguas Creek Pleasant Valley Road to Seminary Road 45033/45035/45037:</b></p> <ul style="list-style-type: none"> <li>▪ Herbicide armored banks and 15 feet from toe in bottom, maintain access road as needed during year.</li> <li>▪ No removal of <u>native</u> vegetation on natural (unarmored) banks of channel.</li> <li>▪ Control vegetation (banks and bottom) annually July 1 to February 1 for 100 feet upstream, under, and 100 feet downstream of all bridges/culverts and stabilizers.</li> <li>▪ Allow 20 percent cover of riparian vegetation in channel bottom each year, if feasible.</li> </ul>

**Summary of Applicable BMPs for Project Activities as Taken From the VCPWA - WP Routine Operations And Maintenance EIR, BO and Environmental Permits**

BMP	Description						
	<p><b>SAA 5-541-91: ARROYO LAS POSAS CREEK</b>  Covers reaches: 1) Below Hitch Road 45065  2) From S. Grimes Canyon Road to the Moorpark WWTP 45063  3) Stabilizer upstream of Somis 45053  4) Junction of Seminary Road and Arroyo Las Posas 45051</p> <ul style="list-style-type: none"> <li>▪ Vegetation control may be by hand, mechanical, or herbicide methods.</li> <li>▪ Control vegetation (banks and bottom) annually July 1 to February 1 for 100 feet upstream, under, and 100 feet downstream of all bridges/culverts and stabilizers.</li> <li>▪ Herbicide armored banks and 15 feet from toe in bottom (except established willows), maintain access road as needed during year.</li> </ul> <p><b>SAA 5-542-91: CONEJO CREEK (LINKED TO SAA 5-115-89)</b></p> <ul style="list-style-type: none"> <li>▪ Herbicide routinely cleared portions of banks, maintain access road as needed during year.</li> <li>▪ Control vegetation (banks and bottom) annually July 1 to February 1 for 100 feet upstream, under, and 100 feet downstream of all bridges.</li> <li>▪ Vegetation control may be by hand, herbicide, or mechanical methods, except as noted below.</li> </ul> <p><b>Conejo Creek -Calleguas Creek Confluence to Highway 101 46011/46012/46013/46014:</b></p> <ul style="list-style-type: none"> <li>▪ Permanently allow a strip of riparian vegetation along one side of low flow channel.</li> </ul> <p><b>Conejo Creek Highway 101 to Upland Drain 46015/46016:</b></p> <ul style="list-style-type: none"> <li>▪ Herbicide inside banks and 25 feet from toe in bottom, maintain access road as needed during year. No other herbicide use in bottom.</li> <li>▪ July 1 to February 1: mechanical or hand removal of vegetation in other portions of bottom; allow two 20 foot wide vegetated strips or allow 20 percent of bottom vegetated. If practical, allow vegetated strips along low flow channel.</li> </ul> <p>July 1 to February 1: remove allowed vegetation the following year; allow new equivalent vegetated areas.</p>						
NA	<p><b><u>ENDANGERED SPECIES ADDITIONAL CONDITIONS</u></b>  Facilities and reaches with the potential for endangered species are mapped in the District's GIS system.</p> <p><b>GAMBEL'S WATERCRESS AND MARSH SANDWORT:</b> Conduct full (spring/summer 2014) surveys in 6.98 acres of facilities with suitable habitat. Opportunistically survey for these species during any field visits to facilities with suitable habitat.</p> <p><b>SOUTHERN STEELHEAD:</b> See BMP 5/6 above. For Calleguas Creek watershed, steelhead are generally not present, but an occasional stray may occur and we must stop work and notify NMFS and CDFW immediately.</p> <p><b>CALIFORNIA GNATCATCHER:</b> See survey triggers and protocols in table below. If species present, stop work and notify USACE and USFWS to determine course of action.</p> <table border="1" data-bbox="193 1193 1461 1356"> <thead> <tr> <th data-bbox="193 1193 829 1226">WORK TYPE</th> <th data-bbox="829 1193 1461 1226">SURVEYS NEEDED</th> </tr> </thead> <tbody> <tr> <td data-bbox="193 1226 829 1291">A. Heavy equipment more than 1 day adjacent to identified habitat per maps.</td> <td data-bbox="829 1226 1461 1291">A. 3 bird surveys within 7 days prior to work.</td> </tr> <tr> <td data-bbox="193 1291 829 1356">B. Heavy equipment work more than 3 days adjacent to identified habitat per maps.</td> <td data-bbox="829 1291 1461 1356">B. Morning bird survey prior to every third day of work.</td> </tr> </tbody> </table> <p><b>WESTERN SNOWY PLOVER:</b> Beach grooming at BEMP (near J St. Drain) during March 1 to September 15 requires nesting surveys and coordination with USFWS. Use lifeguard paths for access to minimize impacts to habitat. See also BMP 8.</p>	WORK TYPE	SURVEYS NEEDED	A. Heavy equipment more than 1 day adjacent to identified habitat per maps.	A. 3 bird surveys within 7 days prior to work.	B. Heavy equipment work more than 3 days adjacent to identified habitat per maps.	B. Morning bird survey prior to every third day of work.
WORK TYPE	SURVEYS NEEDED						
A. Heavy equipment more than 1 day adjacent to identified habitat per maps.	A. 3 bird surveys within 7 days prior to work.						
B. Heavy equipment work more than 3 days adjacent to identified habitat per maps.	B. Morning bird survey prior to every third day of work.						

**Summary of Applicable BMPs for Project Activities as Taken From the VCPWA - WP Routine  
Operations And Maintenance EIR, BO and Environmental Permits**

BMP	Description														
	<p><b>CALIFORNIA LEAST TERN:</b> Beach grooming at BEMP (near J St. Drain) during March 1 to August 15 requires nesting surveys and coordination with USFWS. Use lifeguard paths for access to minimize impacts to habitat. See also BMP 8.</p> <p><b>CALIFORNIA RED-LEGGED FROG:</b> USFWS Biological Opinion identified the following impact minimization measures. "Work" includes herbicide, earthwork, and other maintenance, except access road and fence maintenance. See also BMPs 6 and 29. Applies only in Zone 1.</p>														
	<table border="1"> <thead> <tr> <th align="center">MEASURE #</th> <th align="center">ACTION: Zone 1 only</th> </tr> </thead> <tbody> <tr> <td>CRLF-1</td> <td>Approved biologist conducts daily pre-work surveys. Relocate all life stages potentially affected by work.</td> </tr> <tr> <td>CRLF-2</td> <td>Relocation site will be shortest distance to suitable habitat not affected by work.</td> </tr> <tr> <td>CRLF-3</td> <td>Biologist will maintain detailed descriptions of relocated individuals to determine if same individuals are recaptured.</td> </tr> <tr> <td>CRLF-4</td> <td>Biologist will train all O&amp;M personnel and contractors regarding species and work type/boundaries.</td> </tr> <tr> <td>CRLF-5</td> <td>Biologist required to remain on site until all frogs have been relocated, worker education is complete, and vegetation removal has been completed.</td> </tr> <tr> <td>CRLF-6</td> <td>Biologist to permanently remove non-native aquatic species, when feasible.</td> </tr> </tbody> </table>	MEASURE #	ACTION: Zone 1 only	CRLF-1	Approved biologist conducts daily pre-work surveys. Relocate all life stages potentially affected by work.	CRLF-2	Relocation site will be shortest distance to suitable habitat not affected by work.	CRLF-3	Biologist will maintain detailed descriptions of relocated individuals to determine if same individuals are recaptured.	CRLF-4	Biologist will train all O&M personnel and contractors regarding species and work type/boundaries.	CRLF-5	Biologist required to remain on site until all frogs have been relocated, worker education is complete, and vegetation removal has been completed.	CRLF-6	Biologist to permanently remove non-native aquatic species, when feasible.
MEASURE #	ACTION: Zone 1 only														
CRLF-1	Approved biologist conducts daily pre-work surveys. Relocate all life stages potentially affected by work.														
CRLF-2	Relocation site will be shortest distance to suitable habitat not affected by work.														
CRLF-3	Biologist will maintain detailed descriptions of relocated individuals to determine if same individuals are recaptured.														
CRLF-4	Biologist will train all O&M personnel and contractors regarding species and work type/boundaries.														
CRLF-5	Biologist required to remain on site until all frogs have been relocated, worker education is complete, and vegetation removal has been completed.														
CRLF-6	Biologist to permanently remove non-native aquatic species, when feasible.														
	<p><b>Take Limits:</b> Must report acreage of habitat affected by maintenance and mitigation each year in the Ventura River Watershed.</p> <table border="1"> <thead> <tr> <th align="center">TAKE TYPE</th> <th align="center">ACRES/INDIVIDUALS ANNUALLY</th> </tr> </thead> <tbody> <tr> <td>Suitable habitat affected by maintenance and repair activities</td> <td>2.5 acres per year</td> </tr> <tr> <td>Expected take (relocation, harassment, etc) by maintenance and repair</td> <td>25 individuals (eggs, tadpoles or frogs)</td> </tr> <tr> <td>Suitable habitat affected by mitigation or restoration activities</td> <td>10 acres per year</td> </tr> <tr> <td>Expected take by mitigation</td> <td>50 individuals per year (eggs, tadpoles, frogs)</td> </tr> <tr> <td>Critical habitat affected by maintenance and repair activities</td> <td>2.3 acres per year</td> </tr> <tr> <td>Critical habitat affected by mitigation activities</td> <td>10 acres per year</td> </tr> </tbody> </table>	TAKE TYPE	ACRES/INDIVIDUALS ANNUALLY	Suitable habitat affected by maintenance and repair activities	2.5 acres per year	Expected take (relocation, harassment, etc) by maintenance and repair	25 individuals (eggs, tadpoles or frogs)	Suitable habitat affected by mitigation or restoration activities	10 acres per year	Expected take by mitigation	50 individuals per year (eggs, tadpoles, frogs)	Critical habitat affected by maintenance and repair activities	2.3 acres per year	Critical habitat affected by mitigation activities	10 acres per year
TAKE TYPE	ACRES/INDIVIDUALS ANNUALLY														
Suitable habitat affected by maintenance and repair activities	2.5 acres per year														
Expected take (relocation, harassment, etc) by maintenance and repair	25 individuals (eggs, tadpoles or frogs)														
Suitable habitat affected by mitigation or restoration activities	10 acres per year														
Expected take by mitigation	50 individuals per year (eggs, tadpoles, frogs)														
Critical habitat affected by maintenance and repair activities	2.3 acres per year														
Critical habitat affected by mitigation activities	10 acres per year														
	<p><b>TIDEWATER GOBY:</b> USFWS Biological Opinion identified the following impact minimization measures. "Work" includes earthwork, and other maintenance, except access road and fence maintenance. See also BMPs 8 and 22.</p> <table border="1"> <thead> <tr> <th align="center">MEASURE #</th> <th align="center">ACTION</th> </tr> </thead> <tbody> <tr> <td>TWG-1</td> <td>J St Drain downstream of Hueneme Road 42321 &amp; Oxnard Industrial Drain just upstream and downstream of Hueneme Road 42302: channel cleanouts only when water naturally absent (no pumping or diversion of surface water)</td> </tr> <tr> <td>TWG-2&amp; 4</td> <td>Sediment removal or dewatering in other facilities: biologist to use block nets and relocate gobies from work area to suitable nearby habitat per B.O.</td> </tr> <tr> <td>TWG-3</td> <td>Any pump intakes in occupied goby habitat must be screened.</td> </tr> <tr> <td>TWG-5</td> <td>Biologist required to remain on site to observe fish and potential turbidity levels during all dewatering activities; relocate fish as needed.</td> </tr> <tr> <td>TWG-6</td> <td>Block nets may be left overnight if inspected for efficacy..</td> </tr> <tr> <td>TWG-7</td> <td>Do not release gobies into areas scheduled for work on subsequent days.</td> </tr> </tbody> </table>	MEASURE #	ACTION	TWG-1	J St Drain downstream of Hueneme Road 42321 & Oxnard Industrial Drain just upstream and downstream of Hueneme Road 42302: channel cleanouts only when water naturally absent (no pumping or diversion of surface water)	TWG-2& 4	Sediment removal or dewatering in other facilities: biologist to use block nets and relocate gobies from work area to suitable nearby habitat per B.O.	TWG-3	Any pump intakes in occupied goby habitat must be screened.	TWG-5	Biologist required to remain on site to observe fish and potential turbidity levels during all dewatering activities; relocate fish as needed.	TWG-6	Block nets may be left overnight if inspected for efficacy..	TWG-7	Do not release gobies into areas scheduled for work on subsequent days.
MEASURE #	ACTION														
TWG-1	J St Drain downstream of Hueneme Road 42321 & Oxnard Industrial Drain just upstream and downstream of Hueneme Road 42302: channel cleanouts only when water naturally absent (no pumping or diversion of surface water)														
TWG-2& 4	Sediment removal or dewatering in other facilities: biologist to use block nets and relocate gobies from work area to suitable nearby habitat per B.O.														
TWG-3	Any pump intakes in occupied goby habitat must be screened.														
TWG-5	Biologist required to remain on site to observe fish and potential turbidity levels during all dewatering activities; relocate fish as needed.														
TWG-6	Block nets may be left overnight if inspected for efficacy..														
TWG-7	Do not release gobies into areas scheduled for work on subsequent days.														
	<p><b>Take Limits:</b> Must report acreage of habitat affected by maintenance and mitigation each year in all watersheds.</p>														

**Summary of Applicable BMPs for Project Activities as Taken From the VCPWA - WP Routine  
Operations And Maintenance EIR, BO and Environmental Permits**

BMP	Description					
	TAKE TYPE	VENTURA	SANTA CLARA	ORMOND LAGOON	CALLEG CREEK	TOTAL
	Suitable habitat affected by maintenance and repair	3 ac /year	0.1 ac./yr	0.1 ac/yr	2 ac/yr	5.2 ac/yr
	Expected take (relocation, harassment, etc) by maintenance and repair	All individuals within affected area				Indeterminate
	Suitable habitat affected by mitigation or restoration	0	0	0	0	0
	Expected take by mitigation	0	0	0	0	0
	Critical habitat affected by maintenance and repair	0.2 ac/yr	0	0	N/A	0.2 ac/yr
	Critical habitat affected by mitigation or restoration	0	0	0	N/A	0

**LEAST BELL'S VIREO/SW WILLOW FLYCATCHER:** USFWS Biological Opinion identified the following impact minimization measures. "Work" includes earthwork, and other maintenance, except access road and fence maintenance. See also BMPs 4, 7, and 22.

MEASURE #	ACTION
LBV-1	If feasible, conduct work between Sept 16 to Feb 28 in facilities with LBV suitable habitat within 500 feet of work area.
LBV -2	March 1 to September 15: approved biologist conduct surveys for LBV/SWFL prior to work with habitat within 500 feet. (see list of facilities)
LBV -3	If LBV/SWFL nest detected, minimum 500 foot buffer between work and nest unless otherwise agreed to by USFWS. Biologist must monitor nest during work.
LBV -4	Mitigation/restoration projects in suitable LBV/SWFL habitat: avoid removal of willow and cottonwood trees >8 inch dbh..

**Take Limits:** Must report acreage of habitat affected by maintenance and mitigation each year in all watersheds.

TAKE TYPE	VENTURA	SANTA CLARA	CALLEGUAS CREEK	TOTAL
<b>LBV</b>				
Suitable habitat affected by maintenance and repair	3.5 ac/yr	4.6 ac/yr	17.4 ac/yr	25.5 ac/yr
Expected take by maintenance and repair	3 pairs	4 pairs	10 pairs	17 pairs
Suitable habitat affected by mitigation or restoration	10 ac/yr	15 ac/yr	10 ac/yr	35 ac/yr
Expected take by mitigation	6 pairs	9 pairs	6 pairs	21 pairs

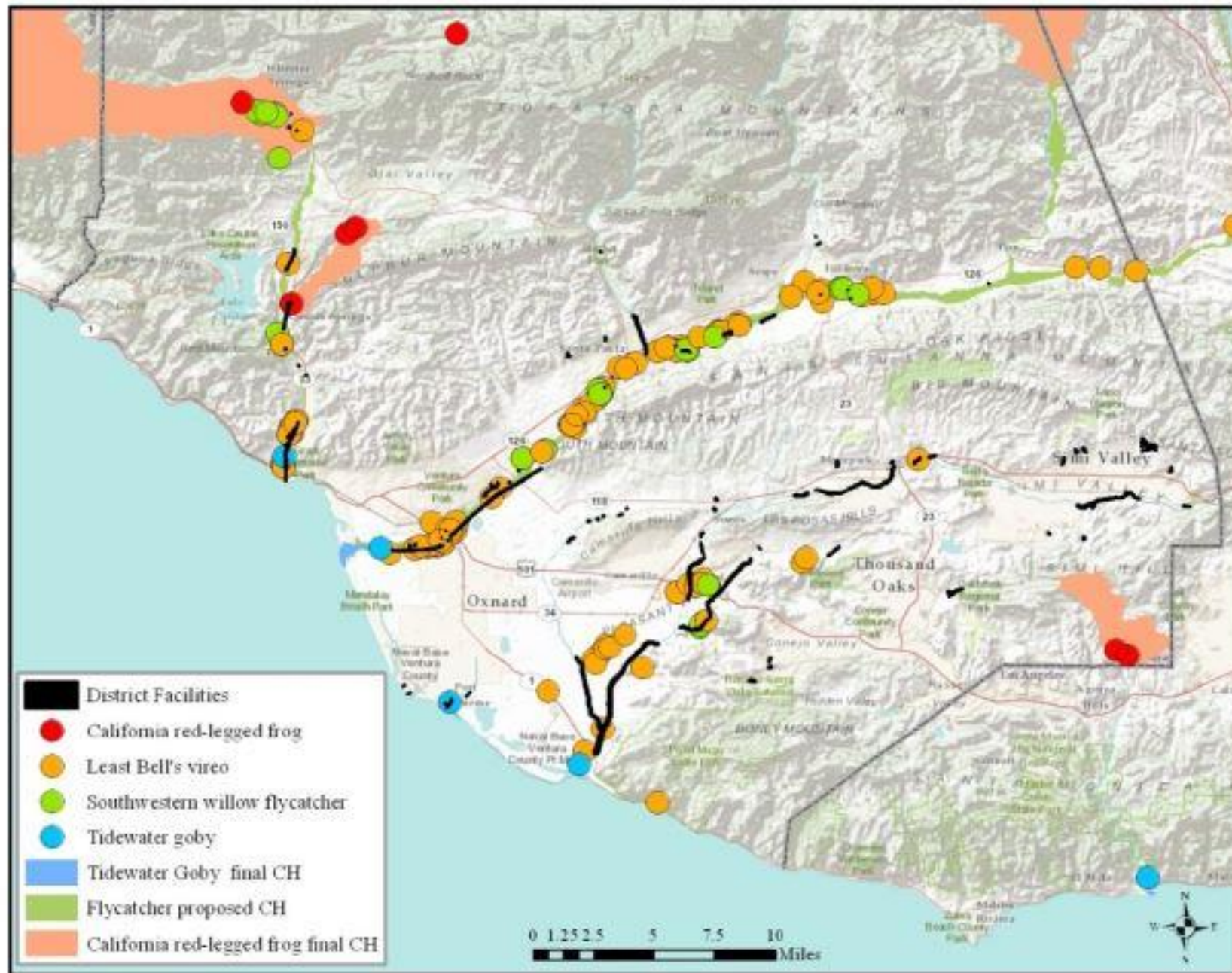
(see SWFL limits next page)

TAKE TYPE	VENTURA	SANTA CLARA	CALLEGUAS CREEK	TOTAL
<b>SWFL</b>				
Suitable habitat affected by maintenance and repair	3.2 ac/yr	4.5 ac/yr	8.4 ac/yr	16.1 ac/yr
Expected take by maintenance and repair	1 pair	1 pair	1 pair	3 pairs
Suitable habitat affected by mitigation or restoration	10 ac/yr	15 ac/yr	10 ac/yr	35 ac/yr

**Summary of Applicable BMPs for Project Activities as Taken From the VCPWA - WP Routine  
Operations And Maintenance EIR, BO and Environmental Permits**

BMP	Description				
	Expected take by mitigation	1 pair	1 pair	1 pair	3 pairs
	Critical habitat affected by maintenance and repair	3 ac/yr	3 ac/yr	N/A	6 ac/yr
	Critical habitat affected by mitigation or restoration	10 ac/yr	15 ac/yr	N/A	25 ac/yr

**APPENDIX E**  
**BIOLOGICAL OPINION DOCUMENTS**



**Figure 3. Location of O&M Program facilities and occurrences of California red-legged frogs, southwestern willow flycatchers, least bell's vireos, tidewater gobies, and their designated and proposed critical habitats within Ventura County.**

### APPENDIX A. TABLE 3 – LEAST BELL’S VIREO

VENTURA RIVER WATERSHED FACILITIES	LENGTH FT	HARD	FAC HAB	TOTAL	ADJ HAB	DAYS	DAYS	DAYS
Levees	Feet	Acres	Acres	Acres	Acres	Avg	Low	High
41021 Casitas Springs Bank Protection	5,810	9.65	1.86	<b>11.51</b>	71.50	4.7	3	7
Note: includes 1.7 ac of existing willow riparian vegetation to be removed at toe upon issuance of permits.								
41011 Bank Protection/Levee (Ocean to Main St.)*	2,800	4.42	0.59	<b>5.01</b>	32.79	4.4	0	11
Note: incl. 1.09 acres of willow habitat removal within 630 linear feet of toe hardscape.								
41012 Bank Protection/Levee (Main St. to Hwy 33)*	10,115	23.20	0.00	<b>23.20</b>	91.39	12.3	7	21
41031 Live Oak Ac Bank Protect./Levee u/s Santa Ana Rd.*	4,640	5.95	1.72	<b>7.67</b>	55.75	3.7	1	8
<b>SUBTOTALS</b>	<b>23,365</b>	<b>43.22</b>	<b>4.17</b>	<b>47.39</b>	<b>251.43</b>			
<b>Outlets to Ventura River</b>								
41131 Canada de San Joaquin Channel and Outlet*	195	0.00	0.18	<b>0.18</b>	12.40			
41110 Stanley Ave. Drain Outlet*	440	0.00	0.62	<b>0.62</b>	12.95			
41121 Dent Drain Outlet*	180	0.00	0.46	<b>0.46</b>	9.01	0	0	0
41152 Canada Larga Channel & Outlet	240	0.28	0.00	<b>0.28</b>	1.17			
41181 Fresno Canyon Outlet to Ventura River*	220	0.00	0.22	<b>0.22</b>	11.23			
41721 Dent Secondary Outlet*	380	0.00	0.52	<b>0.52</b>	12.38			
41728 Cal-trans Secondary Outlet*	40	0.00	0.01	<b>0.01</b>	9.27			
41729 Peking Secondary & 41727 Harrison Secondary Outlets*	1175	0.00	2.50	<b>2.50</b>	23.18	0.4	0	3
41730 Ramona St. Secondary Outlet*	240	0.00	0.39	<b>0.39</b>	10.78			
41731 Simpson St. Secondary Outlet*	375	0.00	0.77	<b>0.77</b>	17.03	0	0	0
41732 Vince St. Secondary Outlet*	200	0.00	0.19	<b>0.19</b>	7.81			
41751 Freeway Side Drain #1 Outlet*	270	0.00	0.37	<b>0.37</b>	12.46	0	0	0
41752 Freeway Side Drain #2 Outlet*	250	0.00	0.27	<b>0.27</b>	10.15			
41753 Freeway Side Drain #3 Outlet*	170	0.00	0.20	<b>0.20</b>	8.56	0	0	0
41754 Freeway Side Drain #4 Outlet*	395	0.00	0.52	<b>0.52</b>	10.81			
41755 Freeway Side Drain #5 Outlet*	50	0.05	0.00	<b>0.05</b>	8.57	0	0	0
<b>SUBTOTALS</b>	<b>4,820</b>	<b>0.33</b>	<b>7.22</b>	<b>7.55</b>	<b>177.76</b>			
<b>Other Facilities</b>								
41901 Matilija Dam and Gage Maintenance*	215	1.88	0.00	<b>1.88</b>	1.26	4.1	2	14
41023 Santa Ana Road Bridge Sediment Removal	240	0.00	0.89	<b>0.89</b>	10.85			
<b>SUBTOTALS</b>	<b>455</b>	<b>1.88</b>	<b>0.89</b>	<b>2.77</b>	<b>12.11</b>			

<b>Stream Gages</b>								
602 Matilija Creek at Matilija Hot Springs Stream Gage*	100	0.00	0.30	<b>0.30</b>	2.66	15	6	30
604 North Fork Matilija Creek at Hwy 33 Stream Gage	65	0.00	0.08	<b>0.08</b>	2.48	18	6	30
605 San Antonio Creek at Casitas Springs Stream Gage	100	0.00	0.30	<b>0.30</b>	6.03	12	6	30
608 Ventura River at Foster Park Stream Gage	100	0.00	0.85	<b>0.85</b>	7.69	11	6	30
ME-VR2 WQ Gage at Ventura River at OVSD Facility	150	0.00	0.10	<b>0.10</b>	5.46	10	5	20
<b>SUBTOTALS</b>	<b>515</b>	<b>0.00</b>	<b>1.63</b>	<b>1.63</b>	<b>24.32</b>			
<b>Mitigation/Restoration Sites</b>								
Lower Ventura River Giant Reed Removal Phase 1*	2,400	0.00	9.85	<b>9.85</b>	49.16	6	4	10
Lower Ventura River Giant Reed Removal Phase 2*	2,330	0.00	11.24	<b>11.24</b>	43.80	6	4	10
<b>SUBTOTALS</b>	<b>4,730</b>	<b>0.00</b>	<b>21.09</b>	<b>21.09</b>	<b>92.96</b>			
<b>Ventura River Watershed GRAND TOTALS</b>	<b>33,885</b>	<b>45.43</b>	<b>35.00</b>	<b>80.43</b>	<b>558.58</b>			
<b>SANTA CLARA RIVER WATERSHED FACILITIES</b>	<b>LENGTH FT</b>	<b>HARD</b>	<b>FAC HAB</b>	<b>TOTAL</b>	<b>ADJ</b>	<b>DAYS</b>	<b>DAYS</b>	<b>DAYS</b>
<b>Levees and Bank Protection</b>	<b>Feet</b>	<b>Acres</b>	<b>Acres</b>	<b>Acres</b>	<b>Acres</b>	<b>Avg</b>	<b>Low</b>	<b>High</b>
42012 Santa Clara River Harbor Blvd to Victoria Levee *	4000	6.95	0.00	<b>6.95</b>	55.24	0.3	0.0	1.0
42017 Santa Clara River Victoria Ave to Ventura Rd Levee*	7200	13.32	0.00	<b>13.32</b>	92.43			
42030 Santa Clara River Weir Field	n/a	1.85	0.78	<b>2.63</b>	30.34			
42021 Santa Clara River 101 Fwy to South Mountain Levee*	24929	92.57	0.00	<b>92.57</b>	273.66	4.7	0.0	11.0
42025 Sudden Barranca to Saticoy Ave Levee*	2545	7.01	0.92	<b>7.93</b>	28.89	1.3	0.0	4.0
42026 Santa Clara River North Bank Groins*	1500	2.79	1.09	<b>3.88</b>	36.72			
42036 Groins @ South Mtn Road*	1825	1.72	0.57	<b>2.29</b>	32.15	0.9	0.0	4.0
42037 Bardsdale Levee	3836	5.12	1.23	<b>6.35</b>	49.39			
43061 &43062 Santa Paula Creek Corps Project	9000	31.68	21.66	<b>53.34</b>	8.61			
43308 Sespe Bank Protection at Goodenough Road	990	0.89	0.00	<b>0.89</b>	14.62			
<b>SUBTOTALS</b>	<b>55825</b>	<b>163.90</b>	<b>26.25</b>	<b>190.15</b>	<b>622.05</b>			
<b>Outlets to Santa Clara River</b>								
43161 Bardsdale Ditch Outlet	30	0	0.02	<b>0.02</b>	10.08			
43191 Basolo Ditch Outlet	30	0	0.05	<b>0.05</b>	10.90			
42511 Brown Barranca Outlet	30	0	0.05	<b>0.05</b>	10.93	0.6	0	2
42205 Central Ave. Drain Outlet	30	0	0.02	<b>0.02</b>	10.12	0.3	0	1
42491 Clark Barranca Outlet	30	0	0.07	<b>0.07</b>	8.96			
42391 El Rio Drain Outlet*	30	0	0.02	<b>0.02</b>	9.78	9.6	3	26
43051 Fagan Canyon Outlet	30	0	0.03	<b>0.03</b>	9.57			

42531 Franklin Barranca Outlet*	30	0	0.17	<b>0.17</b>	9.80			
43181 Grimes Canyon Outlet	30	0	0.03	<b>0.03</b>	10.67	5.6	0	21
42471 Harmon Barranca Outlet*	30	0	0.05	<b>0.05</b>	8.33			
43351 Jepson Wash Outlet to Sespe Creek	30	0	0.02	<b>0.02</b>	9.48			
43361 Keefe Ditch Outlet to Sespe Creek	30	0	0.09	<b>0.09</b>	11.15	4.1	0	15
42701 Montalvo Golf Course Secondary Outlet*	600	0.43	0.30	<b>0.73</b>	12.42	2	0	6
42461 Moon Ditch Outlet*	30	0	0.05	<b>0.05</b>	10.03	3.6	3	4
43041 Peck Road Drain Outlet*	30	0	0.02	<b>0.02</b>	10.12	1.4	0	3
43201 Pole Creek Outlet	30	0	0.01	<b>0.01</b>	13.35			
43251 Real Canyon Outlet	30	0	0.05	<b>0.05</b>	2.42			
42021 Stroube Drain Outlet*	200	0.07	0.21	<b>0.28</b>	12.71			
42501 Sudden Barranca Outlet*	30	0	0.02	<b>0.02</b>	9.48			
42704 Victoria Ave. Drain Secondary Outlet*	30	0	0.16	<b>0.16</b>	12.45	0.7	0	3
43701 Willard Road Secondary Outlet*	30	0	0.02	<b>0.02</b>	12.87			
<b>SUBTOTALS</b>	<b>1370</b>	<b>0.50</b>	<b>1.46</b>	<b>1.96</b>	<b>215.62</b>			
<b>Mitigation/Restoration Sites</b>								
SCR Upstream of Balcom Cyn Wash *	2000	0.00	15.57	<b>15.57</b>	38.31			
SCR So. Mountain Rd. Mitigation Site 1*	275	0.00	0.58	<b>0.58</b>	12.28			
SCR So. Mountain Rd. Mitigation Site 2*	270	0.00	0.50	<b>0.50</b>	12.86			
<b>SUBTOTALS</b>	<b>2545</b>	<b>0.00</b>	<b>16.65</b>	<b>16.65</b>	<b>63.45</b>			
<b>Stream Gages</b>								
709 Santa Paula Crk at Mupu Br Stream Gage (Steckel Pk)	100	0.00	0.24	<b>0.24</b>	3.89			
723 Santa Clara River at Victoria Stream Gage*	100	0.00	0.88	<b>0.88</b>	29.88			
<b>SUBTOTALS</b>	<b>200</b>	<b>0.00</b>	<b>1.12</b>	<b>1.12</b>	<b>33.77</b>			
<b>Santa Clara River Watershed GRAND TOTALS</b>	<b>59,940</b>	<b>164.40</b>	<b>45.48</b>	<b>209.88</b>	<b>934.89</b>			
<b>CALLEGUAS CREEK WATERSHED FACILITIES</b>	<b>LENGTH FT</b>	<b>HARD</b>	<b>FAC HAB</b>	<b>TOTAL</b>	<b>ADJ</b>	<b>DAYS</b>	<b>DAYS</b>	<b>DAYS</b>
<b>Channels</b>	<b>Feet</b>	<b>Acres</b>	<b>Acres</b>	<b>Acres</b>	<b>Acres</b>	<b>Avg</b>	<b>Low</b>	<b>High</b>
45021 Calleguas Creek Hwy 1 to Broome Ranch Crossing*	21120	30.41	0.00	<b>30.41</b>	0.00	14.3	0	24
45023 Calleguas Creek Broome Ranch to Hueneme Rd	8660	28.02	0.00	<b>28.02</b>	0.00	7.3	0	12
45025 Calleguas Creek Hueneme Rd to Lewis Rd	7670	18.01	0.00	<b>18.01</b>	0.92	2	0	5
45027 Calleguas Creek Lewis Rd to 850 ft u/s University Drive	2420	5.03	9.31	<b>14.34</b>	3.32	0.8	0	2
45033 Calleguas Creek Pleasant Valley Rd. to Hwy 101	3860	8.37	1.39	<b>9.76</b>	16.42	2.3	0	4
45035 Calleguas Creek Hwy 101 to Adolfo Rd	2900	8.8	1.37	<b>10.17</b>	16.56	0.4	0	2

45037 Calleguas Creek Adolfo Rd to Seminary Rd.	2720	11.72	3.62	<b>15.34</b>	65.72	0.1	0	1
45051 Arroyo Las Posas @ Seminary	1500	2.26	0.53	<b>2.79</b>	18.86	0	0	0
45063 Arroyo Las Posas WWTP to S. Grimes Cyn	2800	7.49	12.66	<b>20.15</b>	13.99	0.3	0	2
47011 Arroyo Simi Hitch Blvd to Gabbert Cyn*	2740	7.53	6.60	<b>14.13</b>	2.81	1.7	0	3
47012 Arroyo Simi Gabbert Cyn to Beltramo Rd*	5790	10.16	4.67	<b>14.83</b>	15.89	0.1	0	1
47013 Arroyo Simi Beltramo Rd to Moorpark Rd (Spring St.)	7640	17.12	11.58	<b>28.70</b>	3.38	2.4	0	9
47014 Arroyo Simi Moorpark Rd. to SPRR	3525	12.93	7.69	<b>20.62</b>	5.91	0.3	0	1
47015 Arroyo Simi SPRR to No. 2 Canyon	2700	4.08	0.92	<b>5.00</b>	21.86			
47031 Arroyo Simi Tapo Cyn Rd to Parker Ranch	3750	16.07	3.30	<b>19.37</b>	0.61	0.3	0	1
47031 Arroyo Simi Parker Ranch to Lined Section	2410	1.23	1.67	<b>2.90</b>	4.52	0.3	0	1
45240 Beardsley Wash u/s of Zone 2	1500	3.22	1.35	<b>4.57</b>	1.66			
45241 Beardsley Wash Drop Structure #2	100	0.07	0.00	<b>0.07</b>	2.26	0	0	0
45243 Beardsley Wash Drop Structure #3 @ Bella Vista	235	1.06	0.00	<b>1.06</b>	5.79	0.1	0	1
45245 Beardsley Wash Drop Structure #4 (d/s Triple arch)	160	1.17	0.00	<b>1.17</b>	4.56			
45247 Beardsley Wash Connelly Triple Arch	160	0.69	0.00	<b>0.69</b>	4.58	0	0	0
46011 Conejo Creek: Calleguas Crk to Pancho Rd	3250	4.51	5.13	<b>9.64</b>	11.71	5.3	0	8
46012 Conejo Creek Pancho Rd to Howard Rd	3260	5.54	17.02	<b>22.56</b>	1.90	0	0	0
46013 Conejo Creek Howard Rd to u/s end Sanitation Plant*	2240	1.66	1.56	<b>3.22</b>	13.35	0	0	0
46014 Conejo Creek u/s end WWTP to Hwy 101 + Gage	5560	7.01	13.25	<b>20.26</b>	15.93			
46015 Conejo Creek Hwy 101 to Mission Oaks Drain	5980	4.35	29.56	<b>33.91</b>	2.06	1.1	0	5
46016 Conejo Creek Mission Oaks Drain to Upland Drain	5090	5.72	20.03	<b>25.75</b>	11.87	1.9	0	11
45251 Honda Barr. Milligan Barranca to Center School Rd.	1050	0	1.80	<b>1.80</b>	2.69	0.6	0	4
45252 Honda Barranca Center School Rd. to Hwy 118	310	0.56	0.00	<b>0.56</b>	0.86	0.7	0	5
45101 Revolon Slough Hwy 1 to Las Posas Rd.	6870	17.31	0.00	<b>17.31</b>	0.00	3.7	3	5
45103 Revolon Slough Las Posas Rd. to Hueneme Rd.	8210	22.51	0.00	<b>22.51</b>	0.00	7.4	3	11
45105 Revolon Slough Hueneme Rd. to Wood Rd.	7940	20.49	0.00	<b>20.49</b>	0.00	7.6	3	12
46116 So. Branch Arroyo Conejo Chan Kimber to Maurice	1140	0.22	2.99	<b>3.21</b>	3.83	0	0	0
46074 Arroyo Santa Rosa Blanchard Rd Drain to Santa Rosa Rd.	2960	4.82	0.47	<b>5.29</b>	0.51			
<b>SUBTOTALS</b>	<b>138220</b>	<b>290.14</b>	<b>158.47</b>	<b>448.61</b>	<b>274.33</b>			



November 20, 2025

Steven J. Gelfand, Col., USAF (ret)  
Leisure Village, Camarillo, CA

**Subject: California Public Records Act Information Request Regarding Arundo Infestation Along Conejo Creek Near Leisure Village in Camarillo, received November 9, 2025**

Dear Mr. Gelfand:

We've received your request for information regarding vegetation removal activities within the areas of Conejo Creek adjacent to Leisure Village, specifically Highway 101 to Mission Oaks Drain (Reach 46015), Mission Oaks Drain to Upland Drain (Reach 46016), and Upland Road Drain/ Conejo Creek to Santa Rosa Road (Reach 46051). Reach numbers are used to identify segments of Ventura County Watershed Protection District's (WPD) redline channels. Please refer to the attached map (Attachment 1), as it will be referenced in WPD's response herein.

**1. What persons(s) representing the Leisure Village Association agreed that the Arundo infestation along Conejo Creek be controlled by annual "routine vegetation management?" Provide documentation.**

WPD conducts vegetation removal within Conejo Creek facility right-of-way annually to reduce the amount of biomass and vegetation within the channel to maintain flood capacity. Annual vegetation removal conducted as part of WPD's Routine Operations and Maintenance Program does not require additional permissions from Leisure Village Association for these activities.

**2. For how many years has the Arundo infestation been controlled by yearly cutting back the Arundo plants, without removing the cut debris? Please provide copies of the work orders for the past three years.**

Vegetation removal activities can be traced as far back at 1989, as indicated in Attachment 2, CDFW Streambed Alteration Agreement (SAA 5-115-89). These conditions were grandfathered into the current Programmatic Streambed Alteration Agreement. As requested, please refer to Attachment 3 for the last three years of Work Orders for vegetation removal within these portions of Conejo Creek. At the top of Attachment 3, the highlighted numbers are the accounts associated with the



Reach Numbers referenced above and in Attachment 1 (46015, 46016, 46051), and are how WPD keeps record of all work activities conducted in their reaches.

**3. Mr. Palmer told me I could receive a copy of the recent report of the Ventura County biologist(s) concerning the Arundo infestation. I am requesting a copy of the report, or reports.**

Regarding your request for the biological report, please refer to Attachment 4, Pre-Construction Biological Survey Summary email completed by Padre Associates (consultant to Ventura County Watershed Protection District) that was conducted prior to any vegetation removal activities to determine the presence of nesting bird, special-status species, and any issues of environmental concern. The Project Biological Survey and Monitoring Report is still being prepared and can be issued once it's finalized.

**4. What grant funding has been secured by Ventura County for eradicating November the Conejo Creek Arundo infestation? If insufficient grant money is available, what County funds have been allocated to eradicating the Arundo?**

Regarding your request for funding information, all Routine Operations and Maintenance activities are funded through the Ventura County Public Works Agency's Zone 3 Fund, which is collected with property taxes. WPD does not receive or use grant funding for the Routine Operations and Maintenance Program and associated vegetation removal activities. To eradicate Arundo, a comprehensive effort from the very upstream end of the Conejo Creek watershed would be required, since it spreads via broken canes washed downstream. This would be extremely expensive. In our experience, it takes up to ten years to fully kill existing stands of Arundo. Controlling this (and other vegetation) species for public safety within our facility right of way complies with our mission.

**5. What is Ventura County's plan, including timelines, for Eradicating the Arundo a Arundo infestation? Again, please provide documentation.**

WPD does not currently have future plans for Arundo eradication and invasive species removal of these portions of Conejo Creek. As mentioned earlier in this response, the main purpose of vegetation removal activities is to decrease the amount of biomass within the channel for adequate capacity for flood control. This is a large area (approximately 65 acres) for invasive species control, and WPD does not have the funds or staff available for full Arundo invasive species treatment.

You may contact me at [Jeff.Palmer@venturacounty.gov](mailto:Jeff.Palmer@venturacounty.gov) or by telephone at (805) 654-2373 or at if you have any further questions.

Sincerely,

Jeff Palmer, P.E.



Assistant Director  
Public Works Agency

Enclosure: Attachment 1, Location Map  
Attachment 2, CDFW Streambed Alteration Agreement SAA 5-115-89  
Attachment 3, Work Order Reports from January 1, 2021 to November 6, 2025  
Attachment 4, Pre-Construction Biological Survey Summary

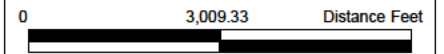
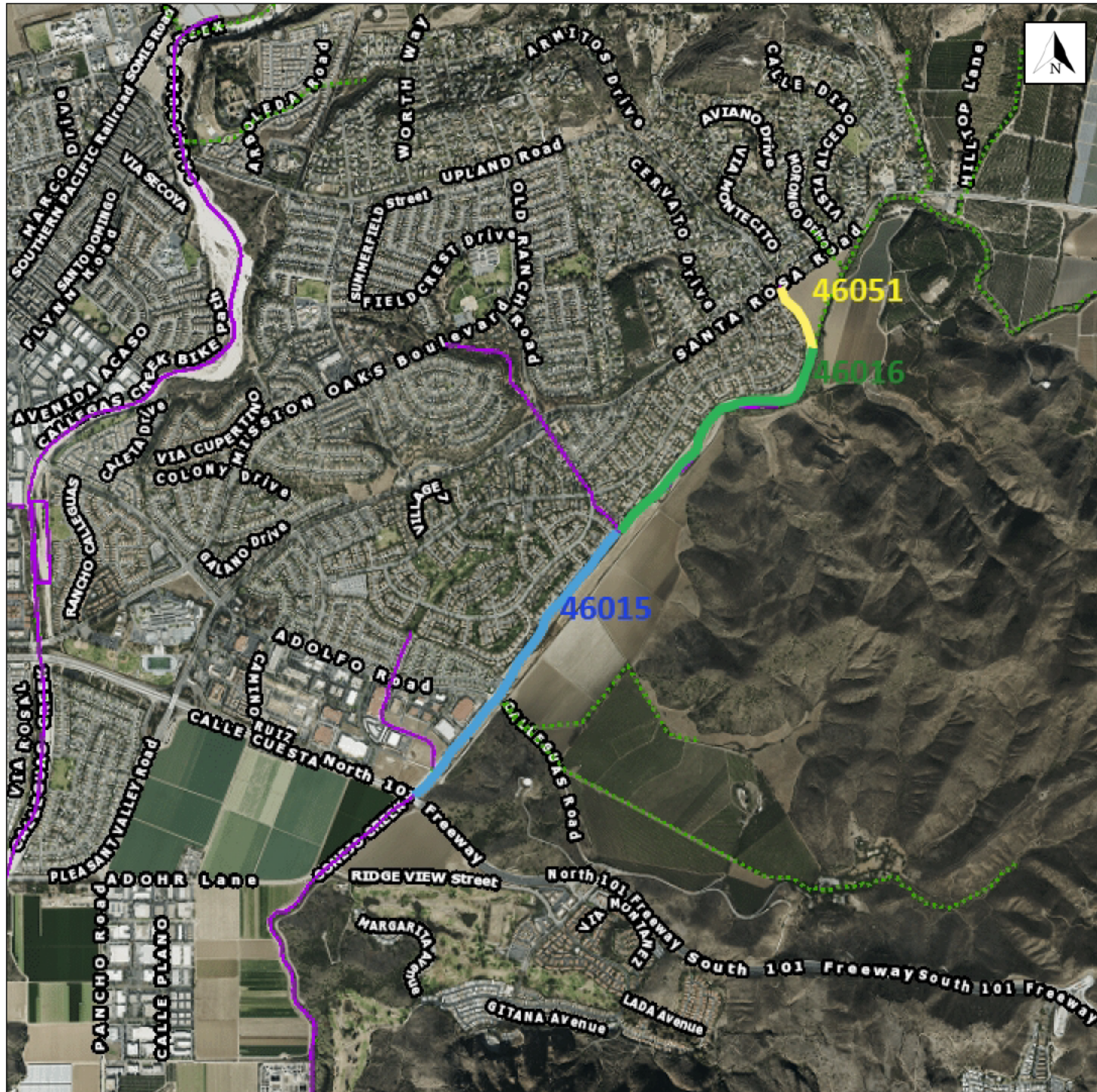
cc: Earthea Nance, Director, Watershed Protection  
Ben Fischetti, Deputy Director, Watershed Protection Operations & Maintenance  
Matthew Ehret, Deputy Director, Watershed Protection Design & Construction  
Pam Lindsey, Watershed Protection Environmental Services  
Emily Medler, Watershed Protection Environmental Services



## Attachment 1, Conejo Creek Vegetation Removal Location Map

### Legend

- Facilities by Reach
- Reach Mapping



1: 36,112

Disclaimer: The information contained on this web site and in this application was created by the Ventura County Geographical Information System (GIS), which is designed and operated solely for the convenience of the County and related contract entities. The County does not warrant the accuracy of this information, and no decision involving a risk of economic loss or physical injury should be made in reliance thereon.

**Attachment 2, California Department of Fish and Wildlife (formerly Game) Streambed Alteration Agreement SAA 5-115-89**

**CALIFORNIA DEPARTMENT OF FISH AND GAME**

330 Golden Shore, Suite 50  
Long Beach, California 90802

Notification No. 5-115-89

Page 1 of 5

**AGREEMENT REGARDING PROPOSED STREAM OR LAKE ALTERATION**

**THIS AGREEMENT**, entered into between the State of California, Department of Fish and Game, hereinafter called the Department, and Ventura County Public Work Agency, Flood Control, State of California, hereinafter called the Operator, is as follows:

**WHEREAS**, pursuant to Section 1601 of California Fish and Game Code, the Operator, notified the Department that they intend to divert or obstruct the natural flow of, or change the bed, channel, or bank of, or use material from the streambed(s) of, the following water(s): Conejo Creek, Ventura County, California, Section      Township      Range     .

**WHEREAS**, the Department (represented by David Drake has made an inspection of subjec area) has determined that such operations may substantially adversely affect existing fish and wildlife resources including: wetland, riparian and aquatic flora and fauna.

**THEREFORE**, the Department hereby proposes measures to protect fish and wildlife resources during the Operator's work. The Operator hereby agrees to accept the following measures/conditions as part of the proposed work.

If the Operator's work changes from that stated in the notification specified above, this Agreement is no longer valid and a new notification shall be submitted to the Department of Fish and Game. Failure to comply with the provisions of this Agreement and with other pertinent code sections, including but not limited to Fish and Game Code Sections 5650, 5652, 5937, and 5948, may result in prosecution.

Nothing in this Agreement authorizes the Operator to trespass on any land or property, nor does it relieve the Operator of responsibility for compliance with applicable federal, state, or local laws or ordinances. A consummated Agreement does not constitute Department of Fish and Game endorsement of the proposed operation, or assure the Department's concurrence with permits required from other agencies.

This Agreement becomes effective on date of Department's signature and terminates December 31, 1992 for project construction only. This Agreement shall remain in effect for that time necessary to satisfy the terms/conditions of this Agreement. Maintenance activities authorized within this agreement shall terminate December 31, 1999.

STREAMBED ALTERATION CONDITIONS FOR NOTIFICATION NUMBER: 5-115-89

1. The following provisions constitute the limit of activities agreed to and resolved by this Agreement. The signing of this Agreement does not imply that the Operator is precluded from doing other activities, at the site. However, activities not specifically agreed to and resolved by this Agreement shall be subject to separate notification pursuant to Fish and Game Code Sections 1600 et seq.
2. The Operator proposes to alter the streambed for realignment of Conejo Creek from the U.S. 101 crossing downstream to the confluence within Calleguas creek and Sta. 10+25 as indicated on Sheet 2 of 45.
3. The agreed work includes activities associated with No. 2 above. Specific work areas and mitigation measures are described on/in the plans and documents submitted by the Operator (dated November 27, 1990).
4. The Operator shall confine all work and future maintenance activities within the floodplain of Conejo Creek and that portion of Calleguas Creek as defined from Sta 10+25 upstream to the U.S. 101 bridge crossing. No equipment activity, access roads, storage areas are authorized outside of the defined area under this agreement except as authorized elsewhere in this agreement.
5. The Operator shall establish and retain a permanent riparian corridor, with a minimum width of 15 feet, along the east, south-east toe of the channel alignment. No maintenance activities, fire control, ect., shall be authorized within this "corridor" without written approval of the Department. As necessary, the controlling of exotic nonnative plant species within this area by approved herbicides and/or with handtools is authorized under this agreement.
6. The Operator may control vegetation within the remaining invert area for maintenance purposes within the following guidelines. The control of vegetation shall not occur between the the time period of January 1 and May 1 of each year. When possible the Operator shall delay controlling vegetation until after August 1, to avoid the entire bird nesting season. The "Corridor" as identified in Condition 5 above shall not be included within the control area.
7. The Operator may maintain a 15 foot pilot channel throughout the length of the project area either by discing, grading, or herbicide application. Any berms established to maintain the low flow within the pilot channel shall not exceed 12 inches in height, as measured from the designed invert elevation.
8. The Operator shall not remove any bird nest without the prior written approval of the Department.

9. Spoils removed from the project site shall not be placed within the improved channel, nor placed where they and the accompanying products can reach State waters.

10. The Operator shall be allowed to control vegetation, outside of the designated riparian corridor, with the use of approved herbicides and/or handclearing when deemed necessary by the Operator, except as otherwise specified in this agreement. Use of herbicides for any other purpose may be considered by the Department upon review of the hydraulic data to be submitted by the Operator, justifying such applications.

11. During project activities, the Operator shall prevent silt laden water from reaching more than 100 feet downstream of the work area. Placement of silt curtains (fabric, hay bales, etc.) shall not prevent, impede, tend to prevent, or impede, the passing of fish up or down stream.

12. The Operator shall submit recent aerial photographs of sufficient scale to identify the subject area within 30 days of the Department's signature. The area of work to be delineated on the photograph(s).

13. The Operator shall submit to the Department for review and approval, prior to initiation of project activities, a detailed planting palette indicating species, quantity, and location of plantings within the permanent riparian corridor. Included with the planting palette shall be a proposed maintenance plan for the riparian corridor area that shall ensure 80% survival after completion of the first year of growth and 100% for years two through five. Upon review of such plans the Department may impose minimum growth and cover standards for certain species and thereby providing the Operator with requirements which could reduce the survival requirements.

14. All rock crushing activities shall be conducted outside of the improved channel.

15. The Operator shall submit for review and approval prior to initiation of such activities, detailed plans pertaining to any armoring within the floodplain. Armoring of the invert or banks is not authorized except for those areas identified by the Operator to protect structures or hydraulic problem areas. All armoring within the agreed upon shall locations be of the ungrouted riprap type.

16. It is the responsibility of the Operator to obtain a MOU with the Department if removal or impacts to listed flora species shall be a result of project implementation.

17. The Operator may use temporary berms to divert waters away from active work sites. berms shall be constructed of clean materials and/or sandbags. All evidence of such berms shall be removed from the floodplain within 48 hours of completing work in said areas. The Operator shall notify the Department in writing of such activities prior to initiation of such work. Use of berms in other areas of the floodplain, except for those used in pilot channel maintenance are not authorized. The Operator shall submit detailed plans pertaining to floodproofing the work areas from flood waters.

18. The Operator shall comply with all litter and pollution laws. All contractors, subcontractors and employees shall also obey these laws and it shall be the responsibility of the operator to insure their compliance.

19. No equipment maintenance shall be done within or near any stream channel or lake margin where petroleum products or other pollutants from the equipment may enter these areas under any flow.

20. The Operator shall provide a copy of this Agreement to all contractors, subcontractors, and the Operator's project supervisors. Copies of the Agreement shall be readily available at work sites at all times during periods of active work and must be presented to any Department personnel, or enforcement personnel from another agency upon demand.

21. The Operator shall notify the Department, in writing, at least five(5) days prior to initiation of construction (project) activities and at least five (5) days prior to completion of construction (project) activities. Notification shall be sent to the Department at 330 Golden Shore, Suite 50, Long Beach, CA 90802, Attn: Environmental Services.

22. The Department reserves the right to enter the project site at any time to ensure that there is compliance with terms/conditions of this Agreement.

23. The Department reserves the right to suspend and/or revoke this Agreement if the Department determines that the circumstances warrant. The circumstances that could require a reevaluation include, but are not limited to, the following:

- a. Failure to comply with the terms/conditions of this Agreement.
- b. The information provided by the Operator in support of the Agreement/Notification is determined by the Department to be incomplete, or inaccurate.
- c. When new information becomes available to the Department representative(s) that was not known when preparing the original terms/conditions of this Agreement.
- d. The project as described in the Notification/Agreement has changed, or conditions affecting fish and wildlife resources change.

CONCURRENCE

(Operator's name)

Ventura Co PWA

*J. Novak* 2/11/91  
(signature) (date)

Deputy Director  
(title)

California Department of  
Fish and Game

*Michael J. ...* 2-27-91  
(signature) (date)

Associate Fisheries Biologist  
(title)

### Attachment 3, Work Order Reports from January 1, 2021 through November 6, 2025

#### Work Report Summary

From 01/01/2021 to 11/06/2025

Mgmt Unit: 00001123

Activity: P340, P417, P417-C, P416-C, P416, P330, P413, P414, P415, P418, P419, P419-C, P420, P420-C, P444, P445

Account: P6046016, P6046015, P6046051

LEM Type: All

Mgmt Unit / Activity	Date	Location	Workgroup	Labor	Equip	Mat	Ctr	Misc	WkQty	WkUnit
<b>00001123 - ZONE 3</b>										<b>30 - ROADS</b>
P340 - DEBRIS REMOVAL	09/20/2024	-	WATERSHED	40.00	169.00	0.00	6.39	0.00	4.50	TONS
P340 - DEBRIS REMOVAL	09/24/2024	-	WATERSHED	32.00	158.00	0.00	22.06	0.00	16.00	TONS
P340 - DEBRIS REMOVAL	09/25/2024	-	WATERSHED	36.00	127.00	0.00	23.58	0.00	16.00	TONS
P340 - DEBRIS REMOVAL	11/09/2024	-	WATERSHED	20.00	63.00	0.00	0.00	0.00	4.00	MILES
P340 - DEBRIS REMOVAL	10/24/2025	-	WATERSHED	48.00	174.00	0.00	0.00	0.00	0.00	MILES
P340 - DEBRIS REMOVAL	10/27/2025	-	WATERSHED	33.00	108.00	0.00	25.30	0.00	8.00	TONS
P340 - DEBRIS REMOVAL	10/28/2025	-	WATERSHED	28.00	140.00	60,000.00	31.02	0.00	8.00	TONS
				<b>237.00</b>	<b>939.00</b>	<b>60,000.00</b>	<b>108.35</b>	<b>0.00</b>	<b>56.50</b>	
<b>00001123 - ZONE 3</b>										<b>GT46 - MOWING, DISCING, TRACK-PACKING</b>
P417 - CHANNEL ACTIVITIES MECH	11/17/2022	-	WATERSHED	0.00	0.00	0.00	1.00	0.00	0.00	ACRES
P417 - CHANNEL ACTIVITIES MECH	11/18/2022	-	WATERSHED	0.00	0.00	0.00	1.00	0.00	0.00	ACRES
P417 - CHANNEL ACTIVITIES MECH	11/21/2022	-	WATERSHED	0.00	0.00	0.00	1.00	0.00	0.00	ACRES
P417 - CHANNEL ACTIVITIES MECH	11/22/2022	-	WATERSHED	0.00	0.00	0.00	1.00	0.00	0.00	ACRES
P417 - CHANNEL ACTIVITIES MECH	11/23/2022	-	WATERSHED	0.00	0.00	0.00	1.00	0.00	0.00	ACRES
P417 - CHANNEL ACTIVITIES MECH	11/28/2022	-	WATERSHED	0.00	0.00	0.00	1.00	0.00	0.00	ACRES
P417 - CHANNEL ACTIVITIES MECH	11/29/2022	-	WATERSHED	0.00	0.00	0.00	1.00	0.00	0.00	ACRES
P417 - CHANNEL ACTIVITIES MECH	11/30/2022	-	WATERSHED	0.00	0.00	0.00	1.00	0.00	0.00	ACRES
P417 - CHANNEL ACTIVITIES MECH	12/01/2022	-	WATERSHED	0.00	0.00	0.00	1.00	0.00	0.00	ACRES
P417 - CHANNEL ACTIVITIES MECH	12/02/2022	-	WATERSHED	0.00	0.00	0.00	1.00	0.00	0.00	ACRES
P417 - CHANNEL ACTIVITIES MECH	12/06/2022	-	WATERSHED	18.00	19.00	0.00	0.00	0.00	2.00	MILES
P417 - CHANNEL ACTIVITIES MECH	12/08/2022	-	WATERSHED	18.00	81.00	0.00	0.00	0.00	2.95	MILES
P417 - CHANNEL ACTIVITIES MECH	08/24/2023	-	WATERSHED	0.00	0.00	0.00	1.00	0.00	1.00	ACRES
P417 - CHANNEL ACTIVITIES MECH	08/25/2023	-	WATERSHED	0.00	0.00	0.00	2.00	0.00	2.00	ACRES
P417 - CHANNEL ACTIVITIES MECH	08/28/2023	-	WATERSHED	0.00	0.00	0.00	2.00	0.00	2.00	ACRES
P417 - CHANNEL ACTIVITIES MECH	08/29/2023	-	WATERSHED	0.00	0.00	0.00	2.00	0.00	2.00	ACRES
				<b>Total:</b>	<b>Total:</b>	<b>Total:</b>	<b>Total:</b>	<b>Total:</b>	<b>Total:</b>	
				746.50	2,844.00	81,618.00	506.85	23.37	290.34	

## Work Report Summary

From 01/01/2021 to 11/06/2025

Mgmt Unit: 00001123

Activity: P340, P417, P417-C, P416-C, P416, P330, P413, P414, P415, P418, P419, P419-C, P420, P420-C, P444, P445

Account: P6046016, P6046015, P6046051

LEM Type: All

Mgmt Unit / Activity	Date	Location	Workgroup	Labor	Equip	Mat	Ctr	Misc	WkQty	WkUnit
P417 - CHANNEL ACTIVITIES MECH	08/30/2023	-	WATERSHED	0.00	0.00	0.00	2.00	0.00	2.00	ACRES
P417 - CHANNEL ACTIVITIES MECH	08/31/2023	-	WATERSHED	0.00	0.00	0.00	1.00	0.00	1.00	ACRES
P417 - CHANNEL ACTIVITIES MECH	09/01/2023	-	WATERSHED	0.00	0.00	0.00	1.00	0.00	1.00	ACRES
P417 - CHANNEL ACTIVITIES MECH	09/05/2023	-	WATERSHED	0.00	0.00	0.00	1.00	0.00	1.00	ACRES
P417 - CHANNEL ACTIVITIES MECH	09/06/2023	-	WATERSHED	0.00	0.00	0.00	1.00	0.00	1.00	ACRES
P417 - CHANNEL ACTIVITIES MECH	09/07/2023	-	WATERSHED	0.00	0.00	0.00	1.50	0.00	1.50	ACRES
P417 - CHANNEL ACTIVITIES MECH	09/08/2023	-	WATERSHED	0.00	0.00	0.00	1.50	0.00	1.50	ACRES
P417 - CHANNEL ACTIVITIES MECH	09/11/2023	-	WATERSHED	0.00	0.00	0.00	1.50	0.00	1.50	ACRES
P417 - CHANNEL ACTIVITIES MECH	09/12/2023	-	WATERSHED	0.00	0.00	0.00	1.50	0.00	1.50	ACRES
P417 - CHANNEL ACTIVITIES MECH	09/13/2023	-	WATERSHED	0.00	0.00	0.00	1.50	0.00	1.50	ACRES
P417 - CHANNEL ACTIVITIES MECH	09/14/2023	-	WATERSHED	0.00	0.00	0.00	1.00	0.00	1.00	ACRES
P417 - CHANNEL ACTIVITIES MECH	09/15/2023	-	WATERSHED	0.00	0.00	0.00	1.00	0.00	1.00	ACRES
P417 - CHANNEL ACTIVITIES MECH	09/18/2023	-	WATERSHED	0.00	0.00	0.00	1.00	0.00	1.00	ACRES
P417 - CHANNEL ACTIVITIES MECH	09/19/2023	-	WATERSHED	0.00	0.00	0.00	1.00	0.00	1.00	ACRES
P417 - CHANNEL ACTIVITIES MECH	09/20/2023	-	WATERSHED	0.00	0.00	0.00	1.00	0.00	1.00	ACRES
P417 - CHANNEL ACTIVITIES MECH	09/20/2023	-	WATERSHED	9.00	58.00	0.00	0.00	0.00	0.65	MILES
P417 - CHANNEL ACTIVITIES MECH	09/21/2023	-	WATERSHED	0.00	0.00	0.00	1.00	0.00	1.00	ACRES
P417 - CHANNEL ACTIVITIES MECH	09/22/2023	-	WATERSHED	0.00	0.00	0.00	1.00	0.00	1.00	ACRES
P417 - CHANNEL ACTIVITIES MECH	09/25/2023	-	WATERSHED	0.00	0.00	0.00	1.00	0.00	1.00	ACRES
P417 - CHANNEL ACTIVITIES MECH	09/25/2023	-	WATERSHED	9.00	35.00	0.00	0.00	0.00	3.99	MILES
P417 - CHANNEL ACTIVITIES MECH	09/26/2023	-	WATERSHED	9.00	35.00	0.00	0.00	0.00	3.18	MILES
P417 - CHANNEL ACTIVITIES MECH	09/27/2023	-	WATERSHED	9.00	35.00	0.00	0.00	0.00	4.25	MILES
				<b>Total:</b>	<b>Total:</b>	<b>Total:</b>	<b>Total:</b>	<b>Total:</b>	<b>Total:</b>	
				746.50	2,844.00	81,618.00	506.85	23.37	290.34	

Row Count: 114

## Work Report Summary

From 01/01/2021 to 11/06/2025

Mgmt Unit: 00001123

Activity: P340, P417, P417-C, P416-C, P416, P330, P413, P414, P415, P418, P419, P419-C, P420, P420-C, P444, P445

Account: P6046016, P6046015, P6046051

LEM Type: All

Mgmt Unit / Activity	Date	Location	Workgroup	Labor	Equip	Mat	Ctr	Misc	WkQty	WkUnit
P417 - CHANNEL ACTIVITIES MECH	09/28/2023	-	WATERSHED	17.00	48.00	0.00	0.00	0.00	4.54	MILES
P417 - CHANNEL ACTIVITIES MECH	10/03/2023	-	WATERSHED	9.00	42.00	0.00	0.00	0.00	2.91	MONTHS
P417 - CHANNEL ACTIVITIES MECH	10/05/2023	-	WATERSHED	0.00	0.00	0.00	1.00	0.00	1.00	ACRES
P417 - CHANNEL ACTIVITIES MECH	10/06/2023	-	WATERSHED	0.00	0.00	0.00	1.00	0.00	1.00	ACRES
P417 - CHANNEL ACTIVITIES MECH	10/09/2023	-	WATERSHED	0.00	0.00	0.00	1.00	0.00	1.00	ACRES
P417 - CHANNEL ACTIVITIES MECH	10/28/2024	-	WATERSHED	0.00	0.00	0.00	2.50	0.00	2.50	ACRES
P417 - CHANNEL ACTIVITIES MECH	10/29/2024	-	WATERSHED	0.00	0.00	0.00	2.50	0.00	2.50	ACRES
P417 - CHANNEL ACTIVITIES MECH	10/30/2024	-	WATERSHED	0.00	0.00	0.00	2.50	0.00	2.50	ACRES
P417 - CHANNEL ACTIVITIES MECH	10/31/2024	-	WATERSHED	0.00	0.00	0.00	2.50	0.00	2.50	ACRES
P417 - CHANNEL ACTIVITIES MECH	11/04/2024	-	WATERSHED	18.00	72.00	0.00	2.50	0.00	4.61	MONTHS
P417 - CHANNEL ACTIVITIES MECH	11/05/2024	-	WATERSHED	18.00	61.00	0.00	1.50	0.00	5.50	MILES
P417 - CHANNEL ACTIVITIES MECH	11/06/2024	-	WATERSHED	16.50	69.00	0.00	1.50	0.00	5.44	MILES
P417 - CHANNEL ACTIVITIES MECH	11/07/2024	-	WATERSHED	18.00	64.00	0.00	1.50	0.00	7.15	MILES
P417 - CHANNEL ACTIVITIES MECH	11/08/2024	-	WATERSHED	0.00	0.00	0.00	1.00	0.00	1.00	ACRES
P417 - CHANNEL ACTIVITIES MECH	11/11/2024	-	WATERSHED	0.00	0.00	0.00	1.00	0.00	1.00	ACRES
P417 - CHANNEL ACTIVITIES MECH	11/12/2024	-	WATERSHED	18.00	60.00	0.00	1.00	0.00	5.42	MILES
P417 - CHANNEL ACTIVITIES MECH	11/13/2024	-	WATERSHED	18.00	70.00	0.00	0.00	0.00	3.42	MILES
P417 - CHANNEL ACTIVITIES MECH	10/16/2025	-	WATERSHED	16.00	125.00	0.00	0.00	0.00	2.00	MILES
P417 - CHANNEL ACTIVITIES MECH	10/20/2025	-	WATERSHED	18.00	86.00	0.00	0.00	0.00	2.00	MILES
P417 - CHANNEL ACTIVITIES MECH	10/21/2025	-	WATERSHED	18.00	48.00	0.00	0.00	0.00	2.00	MILES
P417 - CHANNEL ACTIVITIES MECH	10/22/2025	-	WATERSHED	7.00	54.00	0.00	0.00	0.00	2.00	MILES
P417 - CHANNEL ACTIVITIES MECH	10/23/2025	-	WATERSHED	18.00	60.00	0.00	0.00	0.00	1.50	MILES
				<b>Total:</b>	<b>Total:</b>	<b>Total:</b>	<b>Total:</b>	<b>Total:</b>	<b>Total:</b>	<b>Total:</b>
				746.50	2,844.00	81,618.00	506.85	23.37	290.34	

Row Count: 114

# Work Report Summary

From 01/01/2021 to 11/06/2025

Mgmt Unit: 00001123

Activity: P340, P417, P417-C, P416-C, P416, P330, P413, P414, P415, P418, P419, P419-C, P420, P420-C, P444, P445

Account: P6046016, P6046015, P6046051

LEM Type: All

Mgmt Unit / Activity	Date	Location	Workgroup	Labor	Equip	Mat	Ctr	Misc	WkQty	WkUnit
P417 - CHANNEL ACTIVITIES MECH	10/27/2025	-	WATERSHED	18.00	49.00	0.00	0.00	0.00	1.50	MILES
P417 - CHANNEL ACTIVITIES MECH	10/28/2025	-	WATERSHED	14.00	46.00	0.00	0.00	0.00	1.91	MILES
P417 - CHANNEL ACTIVITIES MECH	10/29/2025	-	WATERSHED	16.00	64.00	0.00	0.00	0.00	1.03	MILES
				329.50	1,281.00	0.00	61.50	0.00	113.45	
<b>00001123 - ZONE 3</b>			<b>GT46 - MOWING, DISCING, TRACK-PACKING</b>							
P417-C - CHANNEL ACTIVITIES MECH- CONTRA	10/15/2025	-	WATERSHED	0.00	0.00	0.00	1.00	0.00	1.00	ACRES
P417-C - CHANNEL ACTIVITIES MECH- CONTRA	10/16/2025	-	WATERSHED	0.00	0.00	0.00	1.50	0.00	1.50	ACRES
P417-C - CHANNEL ACTIVITIES MECH- CONTRA	10/17/2025	-	WATERSHED	0.00	0.00	0.00	1.50	0.00	1.50	ACRES
P417-C - CHANNEL ACTIVITIES MECH- CONTRA	10/20/2025	-	WATERSHED	0.00	0.00	0.00	1.50	0.00	1.50	ACRES
P417-C - CHANNEL ACTIVITIES MECH- CONTRA	10/21/2025	-	WATERSHED	0.00	0.00	0.00	1.50	0.00	1.50	ACRES
P417-C - CHANNEL ACTIVITIES MECH- CONTRA	10/22/2025	-	WATERSHED	0.00	0.00	0.00	1.50	0.00	1.50	ACRES
P417-C - CHANNEL ACTIVITIES MECH- CONTRA	10/23/2025	-	WATERSHED	0.00	0.00	0.00	1.50	0.00	1.50	ACRES
				0.00	0.00	0.00	10.00	0.00	10.00	
<b>00001123 - ZONE 3</b>			<b>GT47 - WEED CONTROL MANUAL</b>							
P416 - VEG CONTROL HAND CREW	12/20/2021	UNKNOWN -	Work Planning	24.00	41.00	0.00	0.00	0.00	0.25	MILES
P416 - VEG CONTROL HAND CREW	10/21/2024	-	WATERSHED	0.00	0.00	0.00	32.00	1.00	0.75	HOURS
P416 - VEG CONTROL HAND CREW	10/22/2024	-	WATERSHED	0.00	0.00	0.00	64.00	2.00	1.50	HOURS
P416 - VEG CONTROL HAND CREW	10/23/2024	-	WATERSHED	0.00	0.00	0.00	64.00	2.00	1.50	HOURS
P416 - VEG CONTROL HAND CREW	10/24/2024	-	WATERSHED	0.00	0.00	0.00	64.00	2.00	1.50	HOURS
P416 - VEG CONTROL HAND CREW	10/25/2024	-	WATERSHED	0.00	0.00	0.00	32.00	1.00	0.75	HOURS
P416 - VEG CONTROL HAND CREW	11/04/2024	-	WATERSHED	0.00	0.00	0.00	32.00	1.00	0.75	HOURS
				<b>Total:</b>	<b>Total:</b>	<b>Total:</b>	<b>Total:</b>	<b>Total:</b>	<b>Total:</b>	
				746.50	2,844.00	81,618.00	506.85	23.37	290.34	

Row Count: 114

# Work Report Summary

From 01/01/2021 to 11/06/2025

Mgmt Unit: 00001123

Activity: P340, P417, P417-C, P416-C, P416, P330, P413, P414, P415, P418, P419, P419-C, P420, P420-C, P444, P445

Account: P6046016, P6046015, P6046051

LEM Type: All

Mgmt Unit / Activity	Date	Location	Workgroup	Labor	Equip	Mat	Ctr	Misc	WkQty	WkUnit
P416 - VEG CONTROL HAND CREW	10/10/2025	-	WATERSHED	20.00	87.00	0.00	0.59	0.00	0.02	TONS
P416 - VEG CONTROL HAND CREW	10/13/2025	-	WATERSHED	18.00	72.00	0.00	2.16	0.00	0.02	TONS
				62.00	200.00	0.00	290.75	9.00	7.04	
<b>00001123 - ZONE 3</b>			<b>GT47 - WEED CONTROL MANUAL</b>							
P416-C - VEG.CONTROL HAND CREW	10/10/2025	-	WATERSHED	0.00	0.00	0.00	5.00	0.84	0.25	TONS
P416-C - VEG.CONTROL HAND CREW	10/13/2025	-	WATERSHED	0.00	0.00	0.00	7.00	0.53	0.35	TONS
P416-C - VEG.CONTROL HAND CREW	10/15/2025	-	WATERSHED	0.00	0.00	0.00	0.75	1.00	0.75	EACH
P416-C - VEG.CONTROL HAND CREW	10/17/2025	-	WATERSHED	0.00	0.00	0.00	0.75	1.00	0.75	EACH
P416-C - VEG.CONTROL HAND CREW	10/20/2025	-	WATERSHED	0.00	0.00	0.00	0.75	1.00	0.75	EACH
P416-C - VEG.CONTROL HAND CREW	10/21/2025	-	WATERSHED	0.00	0.00	0.00	1.50	2.00	1.50	EACH
P416-C - VEG.CONTROL HAND CREW	10/22/2025	-	WATERSHED	0.00	0.00	0.00	1.50	2.00	1.50	EACH
P416-C - VEG.CONTROL HAND CREW	10/23/2025	-	WATERSHED	0.00	0.00	0.00	0.75	1.00	0.75	EACH
P416-C - VEG.CONTROL HAND CREW	10/24/2025	-	WATERSHED	0.00	0.00	0.00	0.75	1.00	0.75	EACH
P416-C - VEG.CONTROL HAND CREW	10/27/2025	-	WATERSHED	0.00	0.00	0.00	0.75	1.00	0.75	EACH
P416-C - VEG.CONTROL HAND CREW	10/28/2025	-	WATERSHED	0.00	0.00	0.00	0.75	1.00	0.75	EACH
P416-C - VEG.CONTROL HAND CREW	10/29/2025	-	WATERSHED	0.00	0.00	0.00	0.75	1.00	0.75	EACH
P416-C - VEG.CONTROL HAND CREW	10/30/2025	-	WATERSHED	0.00	0.00	0.00	0.75	1.00	0.75	EACH
				0.00	0.00	0.00	21.75	14.37	10.35	
<b>00001123 - ZONE 3</b>			<b>GT48 - WEED CONTROL HERBICIDE</b>							
P414 - VEG CONTROL BOOM SPRAY	10/16/2023	-	WATERSHED	12.00	46.00	5,600.00	0.00	0.00	20.00	OZ
P414 - VEG CONTROL BOOM SPRAY	07/23/2024	-	WATERSHED	6.00	30.00	2,220.00	0.00	0.00	10.00	OZ
P414 - VEG CONTROL BOOM SPRAY	07/24/2024	-	WATERSHED	18.00	42.00	2,220.00	0.00	0.00	10.00	OZ
				36.00	118.00	10,040.00	0.00	0.00	40.00	
<b>00001123 - ZONE 3</b>			<b>GT48 - WEED CONTROL HERBICIDE</b>							
P415 - VEG CONTROL HAND SPRAY	05/13/2021	UNKNOWN -	Work Planning	8.00	23.00	568.00	0.00	0.00	2.00	OZ
				<b>Total:</b>	<b>Total:</b>	<b>Total:</b>	<b>Total:</b>	<b>Total:</b>	<b>Total:</b>	
				746.50	2,844.00	81,618.00	506.85	23.37	290.34	

Row Count: 114

# Work Report Summary

From 01/01/2021 to 11/06/2025

Mgmt Unit: 00001123

Activity: P340, P417, P417-C, P416-C, P416, P330, P413, P414, P415, P418, P419, P419-C, P420, P420-C, P444, P445

Account: P6046016, P6046015, P6046051

LEM Type: All

Mgmt Unit / Activity	Date	Location	Workgroup	Labor	Equip	Mat	Ctr	Misc	WkQty	WkUnit	
P415 - VEG CONTROL HAND SPRAY	12/20/2021	UNKNOWN -	Work Planning	10.00	65.00	145.00	0.00	0.00	0.00	OZ	
P415 - VEG CONTROL HAND SPRAY	09/07/2022	-	WATERSHED	0.00	0.00	0.00	3.00	0.00	3.00	ACRES	
P415 - VEG CONTROL HAND SPRAY	09/08/2022	-	WATERSHED	0.00	0.00	0.00	8.50	0.00	8.50	ACRES	
P415 - VEG CONTROL HAND SPRAY	09/12/2022	-	WATERSHED	0.00	0.00	0.00	3.00	0.00	3.00	ACRES	
P415 - VEG CONTROL HAND SPRAY	08/31/2023	-	WATERSHED	10.00	20.00	840.00	0.00	0.00	3.00	OZ	
P415 - VEG CONTROL HAND SPRAY	05/06/2025	-	WATERSHED	10.00	35.00	876.00	0.00	0.00	3.00	OZ	
P415 - VEG CONTROL HAND SPRAY	08/19/2025	-	WATERSHED	10.00	40.00	630.00	0.00	0.00	1.50	OZ	
				48.00	183.00	3,059.00	14.50	0.00	24.00		
<b>00001123 - ZONE 3</b>							<b>GT48 - WEED CONTROL HERBICIDE</b>				
P444 - PRE EMERGENT BOOM SPRAY	03/19/2024	-	WATERSHED	12.00	30.00	4,980.00	0.00	0.00	20.00	OZ	
				12.00	30.00	4,980.00	0.00	0.00	20.00		
<b>00001123 - ZONE 3</b>							<b>GT48 - WEED CONTROL HERBICIDE</b>				
P445 - PRE EMERGENT HAND SPRAY	04/20/2023	-	WATERSHED	8.00	41.00	1,329.00	0.00	0.00	3.00	OZ	
P445 - PRE EMERGENT HAND SPRAY	04/27/2023	-	WATERSHED	8.00	12.00	886.00	0.00	0.00	2.00	OZ	
P445 - PRE EMERGENT HAND SPRAY	11/03/2025	-	WATERSHED	6.00	40.00	1,324.00	0.00	0.00	4.00	OZ	
				22.00	93.00	3,539.00	0.00	0.00	9.00		
				22.00	93.00	3,539.00	0.00	0.00	9.00		
				<b>Total:</b>	<b>Total:</b>	<b>Total:</b>	<b>Total:</b>	<b>Total:</b>	<b>Total:</b>		
				746.50	2,844.00	81,618.00	506.85	23.37	290.34		

Row Count: 114

## Attachment 4, Pre-Construction Biological Survey Summary

**Medler, Emily**

---

**From:** [REDACTED] [REDACTED]@padreinc.com>  
**Sent:** Wednesday, October 8, 2025 12:31 PM  
**To:** [REDACTED]  
**Subject:** Conejo US 101 Survey - 10/8/25

Good afternoon everyone,

Today (10/8/25), during the morning hours, I conducted a biological survey within Conejo Creek upstream of Highway 101 to the confluence with Upland Road Drain (Reach 46015 and 46016) and the section of Upland Road Drain between the confluence with Conejo Creek and the culvert outlet beneath Santa Rosa Road (Reach 46051). The entirety of the reach was surveyed for the presence of nesting birds, special-status species, and potential issues of environmental permit concern, which might preclude or alter the planned scope of work. At no point during today's survey were any issues which would prevent work from commencing as planned observed. Therefore, from a biological standpoint work is clear to begin. A list of wildlife observed during today's survey can be found at the bottom of this email and relevant conservation recommendations can be found below.

According to Watershed's environmental documents (EIR and BO), special-status species with the potential to occur within the surveyed sections of Conejo Creek include southwestern pond turtle, two-striped garter snake, and arroyo chub, all of which are listed as Species of Special Concern (SSC) by the California Department of Fish and Wildlife (CDFW). While none of these species were documented during today's survey, suitable habitat for each species is present within the planned work area, and in past years I have personally documented each of these species within the subject sections of Conejo Creek (re: southwestern pond turtle) or within the watershed upstream or downstream of the subject reach (re: two striped gartersnake and arroyo chub), so the potential for these species to occur within the subject reach exists, and crews should be aware of this potential. In accordance with Watershed's environmental documents, if any of these species are observed during maintenance activities, a qualified biologist should also be contacted for guidance and to move these species to areas of suitable habitat that will not be affected by maintenance activities.

It is our understanding that work activities will follow a similar pattern as has been performed in previous years and will include discing of approximately 80% of the vegetation adjacent to the low flow channel. At the time of the survey, there was a considerable amount of surface water flows in the low-flow channel and a number of marsh like areas within the reach, both of which should be avoided to the maximum extent feasible as these areas have an increased likelihood to contain the aforementioned sensitive species. To ensure the species observed during today's survey, as well as other potentially occurring species within Conejo Creek, are not affected by the proposed maintenance activities the following protection and avoidance measures are recommended;

- Avoid entering the low flow (It is understood that channel crossings will be required, however these crossings should be kept to a minimum and performed consistently in the same area(s), if possible);
- Leave a buffer of existing vegetation (approximately 10 feet) adjacent to the low flow channel to serve as surrogate wildlife habitat;
- Avoid maintenance activities in any wetted, marsh like habitat that exists outside of the low flow channel;
- Ensure that equipment is free of leaks daily before maintenance activities begin;
- Stage equipment outside of the channel overnight; and
- If wildlife which is unable to move off on its own accord are observed in the path of maintenance activities, a qualified biologist should be contacted for guidance and to assist in relocation efforts.

**Species observed:**

**Birds:**

mallard  
mourning dove  
Anna's hummingbird  
Allen's hummingbird  
American coot  
great blue heron  
white-tailed kite  
red-shouldered hawk  
red-tailed hawk  
American barn owl  
belted kingfisher  
American kestrel  
black phoebe  
Say's phoebe  
Cassin's kingbird  
warbling vireo  
American crow  
bushtit  
wrentit  
blue-gray gnatcatcher  
rock wren  
canyon wren  
house wren  
Bewick's wren  
European starling (non-native)  
northern mockingbird  
scaly-breasted munia (non-native)  
house finch  
lesser goldfinch  
American goldfinch  
white-crowned sparrow  
song sparrow  
Lincoln's sparrow  
song sparrow  
California towhee  
spotted towhee  
red-winged blackbird  
common yellowthroat  
yellow-rumped warbler

**Mammals:**

raccoon (tracks and scat)  
coyote (tracks and scat)  
mule deer (tracks)  
California ground squirrel  
Botta's pocket gopher (burrows)

**Reptiles:**

western fence lizard  
common side blotched lizard

**Amphibians:**

American bullfrog (non-native)  
pacific treefrog

**Fish:**

mosquito fish (non-native)  
bass sp. (non-native)  
common carp (non-native)

Please let me know if you have any questions.

Thanks,

[REDACTED]  
Biologist/Project Manager  
Padre Associates  
1861 Knoll Dr.  
Ventura, CA 93003

[REDACTED]  
[REDACTED]

Note: Cell phone is the best way to reach me.

The information contained in this message may be CONFIDENTIAL and is for the intended addressee only. Any unauthorized use, dissemination of the information, or copying of this message is prohibited. If you are not the intended addressee, please notify the sender immediately and delete this message. Thank you.